

Service Bulletin

- ☐ Generally
- ☐ Dishwashers
- ☐ Bedpan Washer Disinfectors
- ☒ Instrument Washer Disinfectors
- ☐ Process Solution

SB # 195

Published: 19-12-2018

By: Service/DJ

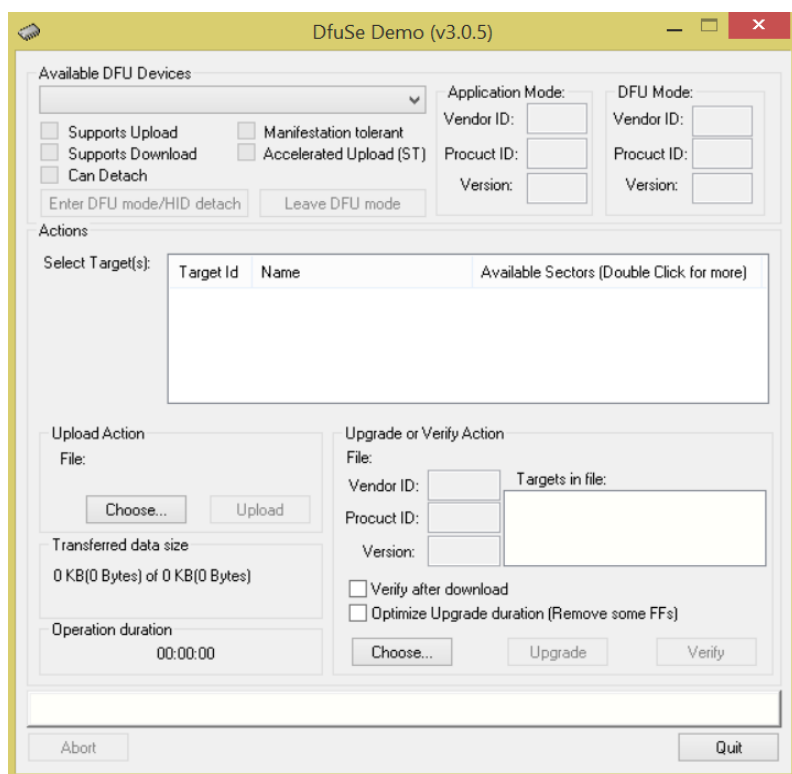
- ☐ To be exchanged as soon as possible
- ☐ To be exchanged at the next maintenance
- ☐ To be exchanged at the usual service interval
- ☒ Information

Change made from machine # N/A

Guide to upgrade software on IQ-series machines:

Upgrade the C15 controllers:

a) Start DfuseDemo on your pc/laptop.



b) Power OFF the C15 controller.

c) Set dip switch 3 to ON (Dip switch block between Netcom and ETH) as shown in figure 1.

d) Connect the C15 controller to your pc/laptop with a USB to micro-USB cable. The C15 controller is powered through the USB-cable and power LED must be lid as shown in figure 2.

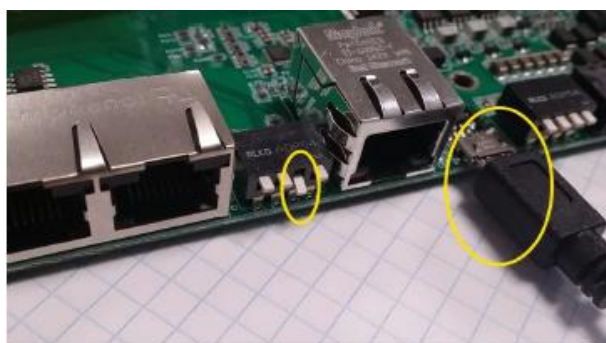


Figure 1 - Dipswitch and USB cable.



Figure 2 - Power LED.

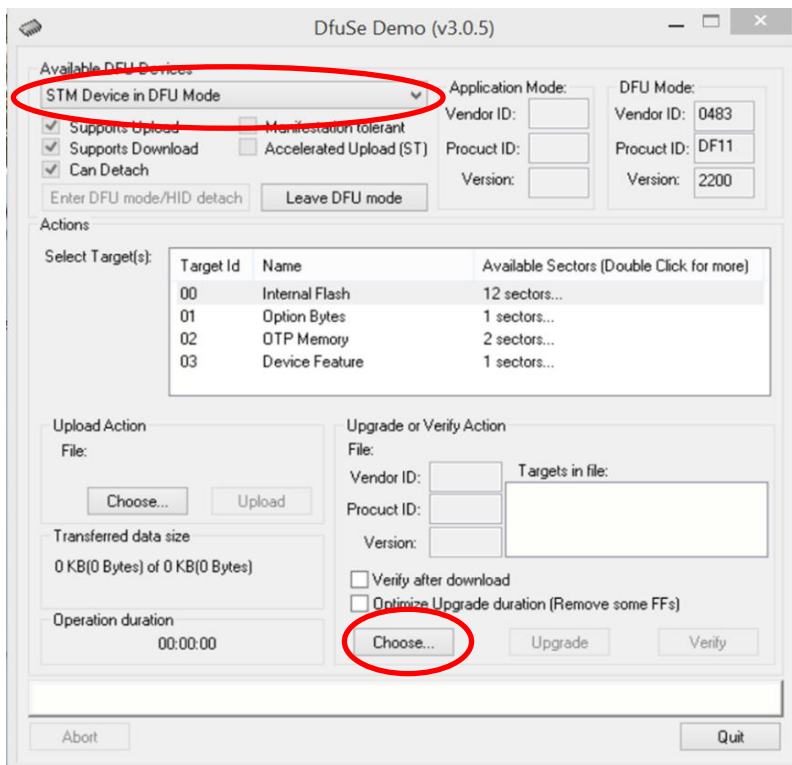
Service Bulletin

SB # 195

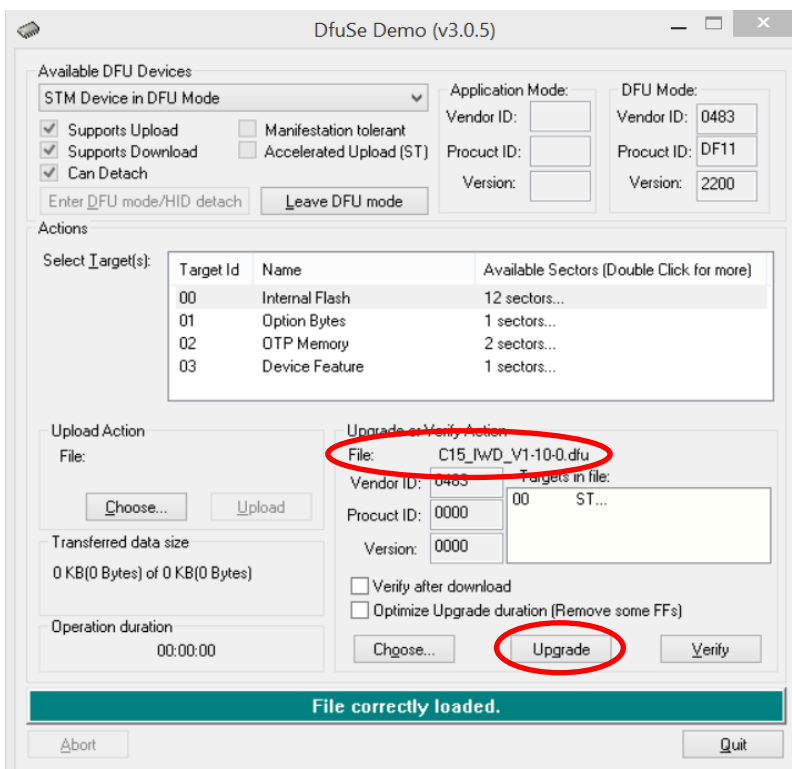
Published: 19-12-2018

By: Service/DJ

- e) Control that the following text "STM Device in DFU Mode" appears in the DfuseDemo dialog box.
f) Press choose



- g) Select the file, eg. C15_IWD_V1-10-1.dfu
h) Await that "File correctly loaded." appears in the dialog box.
i) Press Upgrade

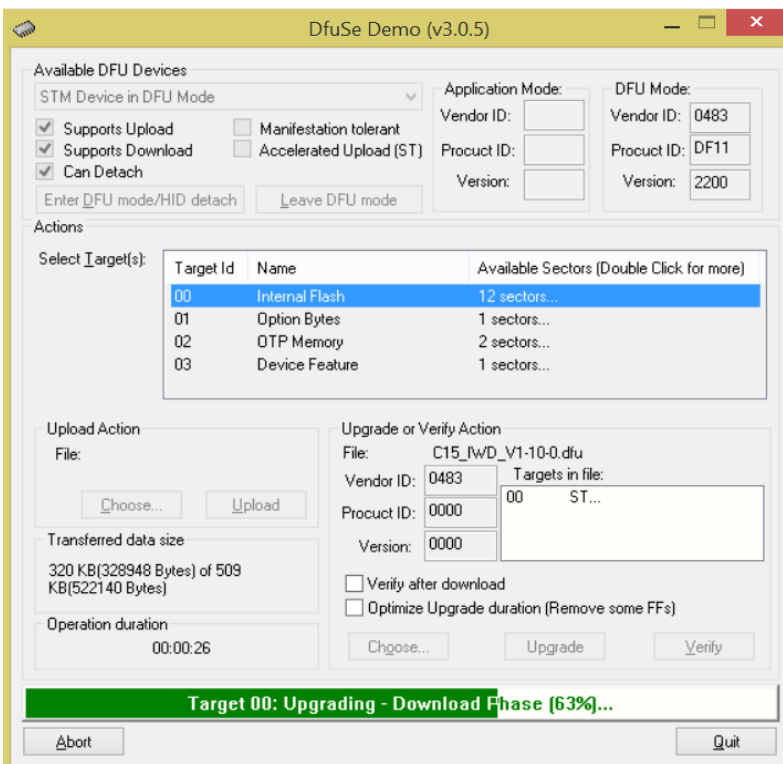
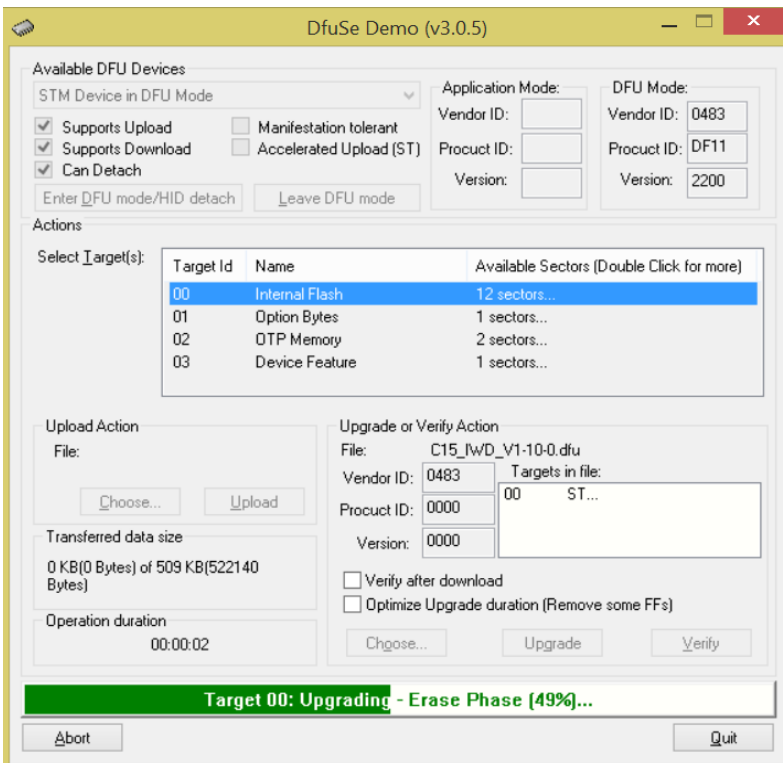
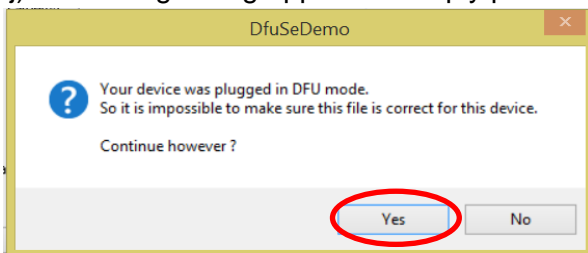


Service Bulletin

SB # 195
Published: 19-12-2018

By: Service/DJ

j) A warning dialog appears - simply press "YES"

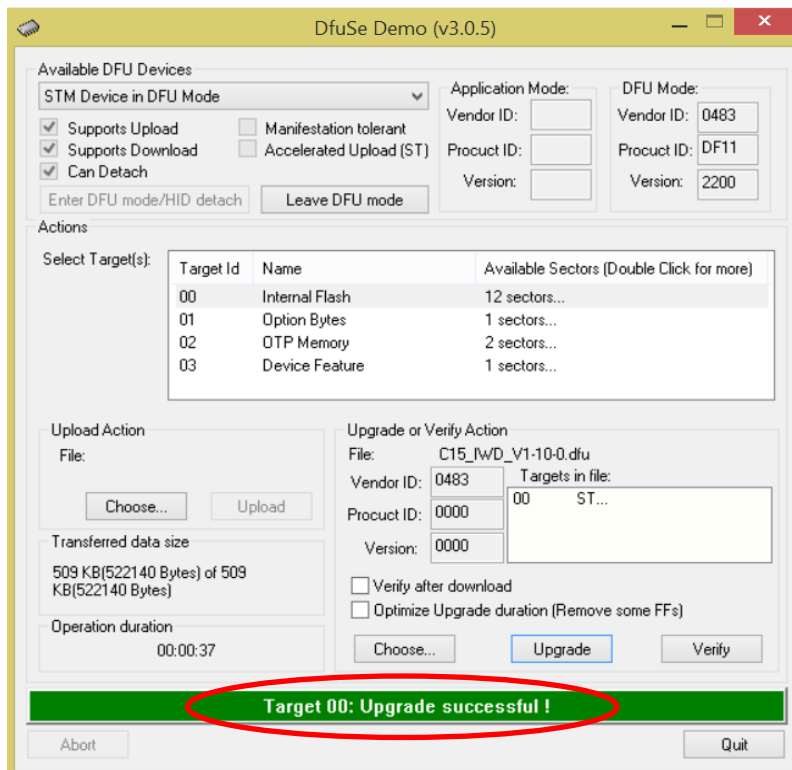


Service Bulletin

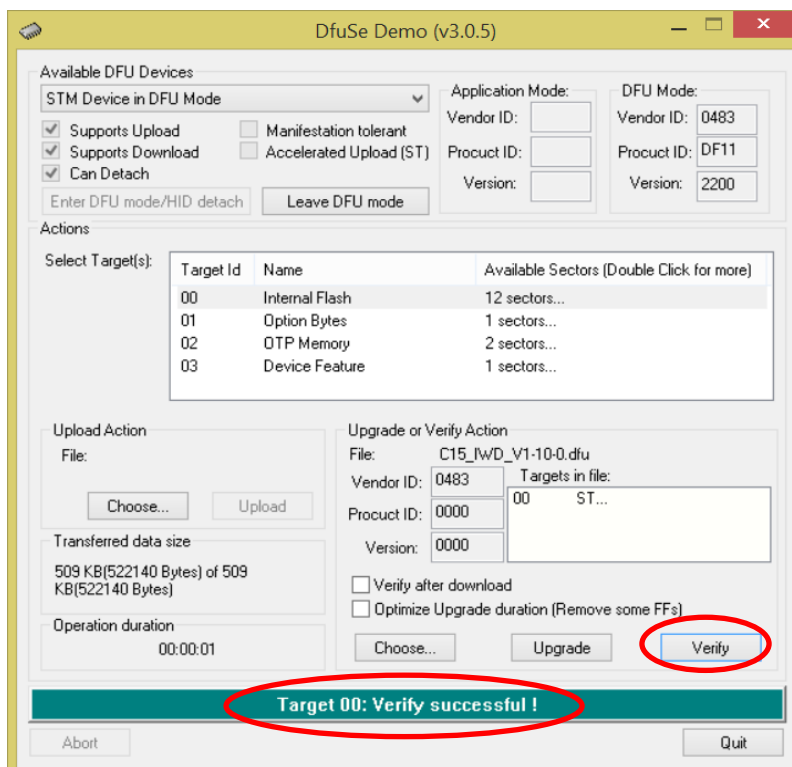
SB # **195**
Published: **19-12-2018**

By: Service/DJ

k) Await "Target 00: Upgrade succesfull !"



l) Press "Verify"



m Await "Target 00: Verify succesfull !"

n) If the verification fails, control the connections of the USB-cable, and repeat the software upgrade.

o) Upgrade both C15 controllers in the machine.

Service Bulletin

SB # 195
Published: 19-12-2018

By: Service/DJ

Upgrade the HMI (touch) panels:

- a) Copy the "Kupgrade" folder into the root of a MicroSD card. The folder must not be a zipped folder.
- b) Power OFF the machine.
- c) Insert the MicroSD card into the panel.
- d) Power ON the machine. After a while the text "Upgrading..." appears on the HMI, and then "Done..".
- e) Remove the MicroSD card from the HMI.



These instructions are intended as guidance only, to help certified technicians, trained by KEN HYGIENE SYSTEMS A/S, or by a KEN HYGIENE SYSTEMS A/S approved training partner, install and maintain products manufactured by KEN HYGIENE SYSTEMS A/S.

Rights to alterations reserved!

KEN HYGIENE SYSTEMS A/S, DK- 5672 BROBY, CVR 10676096 Ph.: +4562631091 E-mail: Service@ken.dk Internet: www.ken.dk