

## Service Bulletin

SB # 213

Published: 04/11/2019

By: Service/DJ

- ☐ Generally
- ☐ Dishwashers
- ☐ Bedpan Washer Disinfectors
- ☒ Instrument Washer Disinfectors
- ☐ Process Solution

- ☐ To be exchanged as soon as possible
- ☐ To be exchanged at the next maintenance
- ☐ To be exchanged at the usual service interval
- ☒ Information

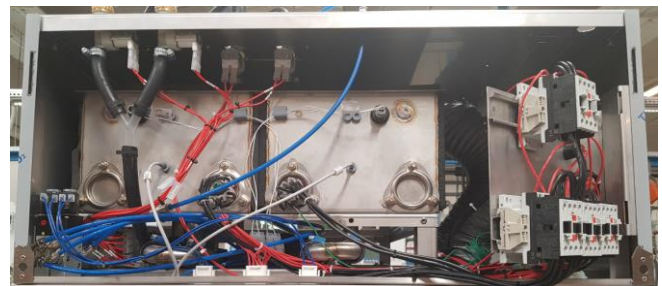
Change made from machine # N/A

### IQ5 & 6 - Guide to install High speed/condenser module with multi plugs:

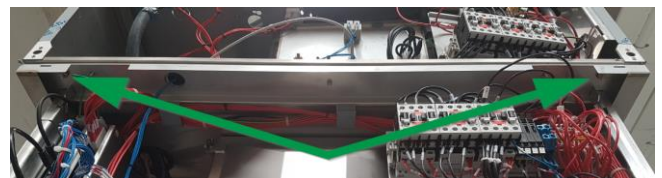


Machines ordered with condenser or high speed modules are delivered in 2 colli . 1st. colli is the machine and the 2nd. colli is the high speed / condenser module (HS module), Please install the machine as described in the technical manual, and then install the HS module as described in this document.

Place the HS module (condenser / high speed module) on the top of the machine:



- and secure it, in each corner of the top plate with the bolts and nuts delivered with the module.



# Service Bulletin

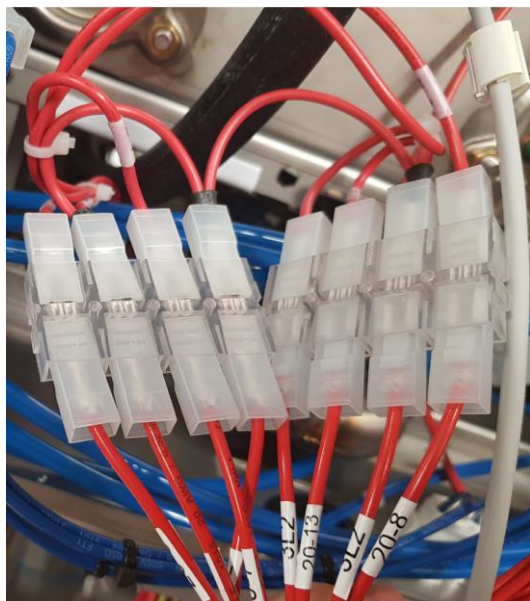
SB # 213  
Published: 04/11/2019

By: Service/DJ

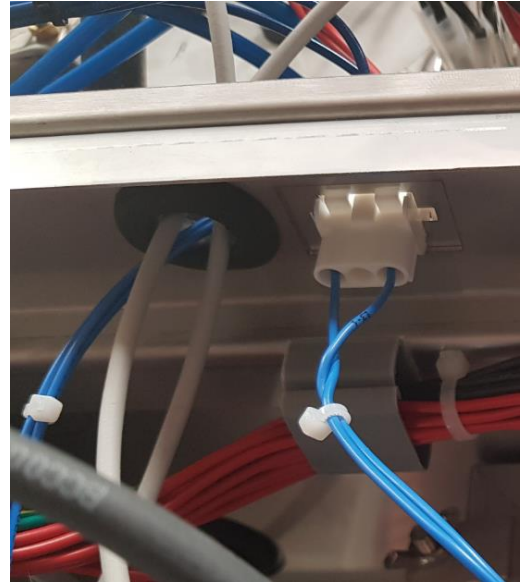
Locate the below shown wire bundle in the left hand side of the upper service area of machine, and lead them to the HS module via the left hand side round through hole behind the controllers:



The bundle contains following wires: 20-6 / 3L2 for V1, 20-7 / 3L2 for V2, 20-8 / 3L2 for V3 (Option), 20-13 / 3L2 for V4 (Tank 1), 21-4 / 3L2 for V5 (Tank 2) and 21-1 / 3L2 for V6 (cooling drain) -connect them to matching numbered wires in the connection plinths shown below:



Locate the wire bundle with blue wires marked 13-13, 13-14, 13-15, 13-16 and the thermo sensors B32 and B51 in the left hand side of the upper service area of the machine - lead them to the HS module via the round through hole in front of the machine:



Wire 13-13 / 13-14 must be connected to the level sensor of tank 2 (left) and wire 13-15 / 13-16 must be connected to the level sensor of tank 1 (right):



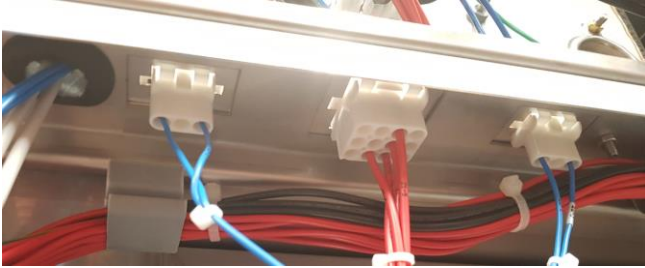


# Service Bulletin

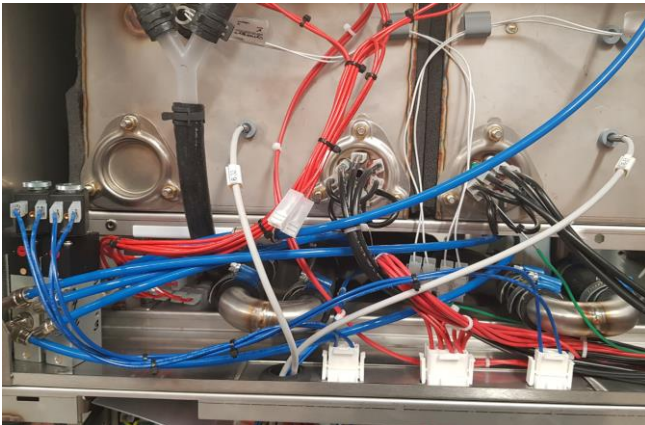
SB # 213  
Published: 04/11/2019

By: Service/DJ

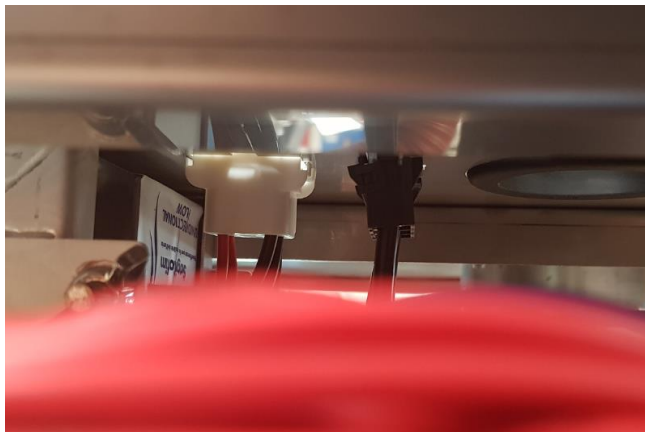
Locate and mount the below shown multi plugs in the top plate - the plug with blue wires 23-1 / 23-2 to the left and 22-1 / 22-3 to the right.



Connect the plug of the left pneumatic valve to the left plug and the plug of the right pneumatic valve to the right plug. Connect the 12-pole plug with red wires to the matching plug in the front. Thermo sensor B32 must be mounted in tank 2 (left) and B51 in tank 1 (right).



Locate and mount the below shown multi plugs in the top plate - behind the electrical panel.



Locate and connect the matching plugs in the right hand side of the HS module - behind the panel with contactors. Black 3-pole plug L1 / L2 / L3 and white 9 pole plug 4L1 / 4L2 / 4 L3 / 3L1 / 3L2B.



Connect the blue shaped hose to the overflow pipes of the tank(s).

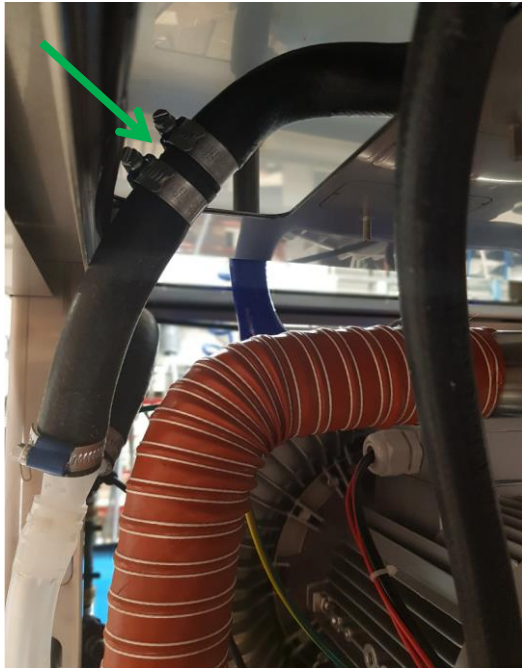


# Service Bulletin

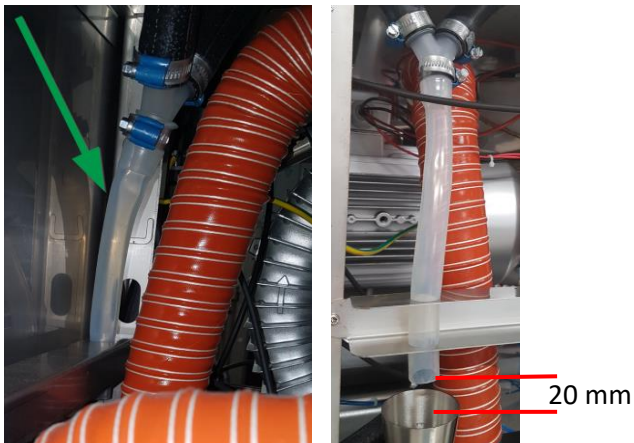
SB # 213  
Published: 04/11/2019

By: Service/DJ

Connect the tube from the pneumatic valve(s)  
to the tube for the water inlet:



When all hoses are connected, it is important  
that you control the silicone tubing for the air  
gab of the water inlet - it must run without  
kinks and the air gab between the hose and  
the funnel must be 20 mm:



These instructions are intended as guidance only, to help certified technicians, trained by KEN HYGIENE SYSTEMS A/S, or by a KEN HYGIENE SYSTEMS A/S approved training partner, install and maintain products manufactured by KEN HYGIENE SYSTEMS A/S.  
Rights to alterations reserved!