

1. UNPACKING AND ROBOT ASSEMBLY

- i. The 2280 will ship with five boxes secured to a pallet, take note of any possible shipping damage.
- ii. Unwrap the five boxes from the pallet and remove the black straps.



- iii. Remove the first emitter, upper portion from one of the tall boxes. The upper box portion will slide off the lower box portion.



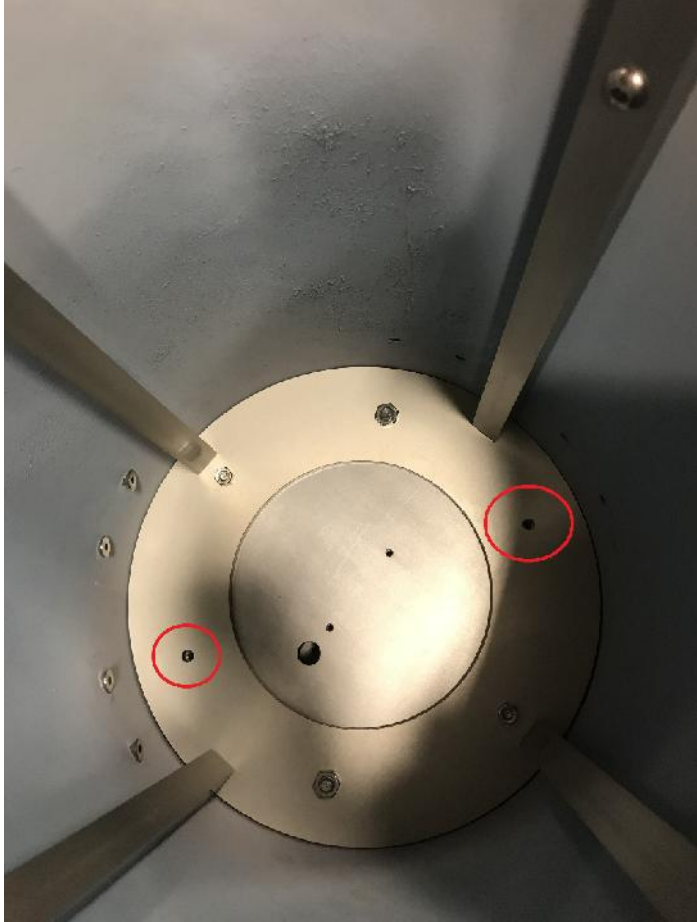
- iv. Invert the emitter onto a flattened box or included foam.



- v. Place the inverted base atop the inverted emitter, ensuring the shoulder bolts slide into emitter's bottom plate. The base with the pull pin goes with the even numbered unit and the base with the slot goes with the odd numbered, primary emitter.



- vi. Rotate the base clockwise to lock into position. When locked into position, thread and tighten two fasteners, included in accessories, into the two through holes.



- vii. Turn the entire unit right side up & repeat with the partner unit and the base with the pull pin.
- viii. Review the accessories box and ensure handheld, door signage, door motion modules, barrier signage, carabineer, and black Skytron accessory bag are included.

