



5085 Corporate Exchange Blvd. S.E.
Grand Rapids, MI 49512 • 616.656.2900

PN H8-300-53-A

H8-300-33-A

H8-300-39-A

H8-200-58-1-A

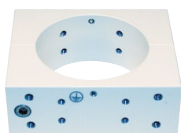
H8-200-58-A

H8-300-40-B

VST CLAMP INSTALLATION - INSTRUCTIONS FOR USE

The Vertical Support Tube (VST) clamp is used on Skytron's Ergon 3 series booms. The VST clamp is used as a mounting feature for a variety of boom components. Installation for the H8-300-53-A and H8-300-39-A clamps is the same.

Clamps



H8-300-53-A



H8-300-39-A

GCX Channel



GCX CHANNEL (H8-300-40-B)

Required Tools

- 4mm Allen wrench
- 5mm Allen wrench
- Blue LocTite thread locking compound

GCX Channel Installation

1. Use a 5mm Allen wrench to remove the two screws from the VST (Vertical Support Tube) clamp, then separate the two halves (Figure 1). One is located on each side.

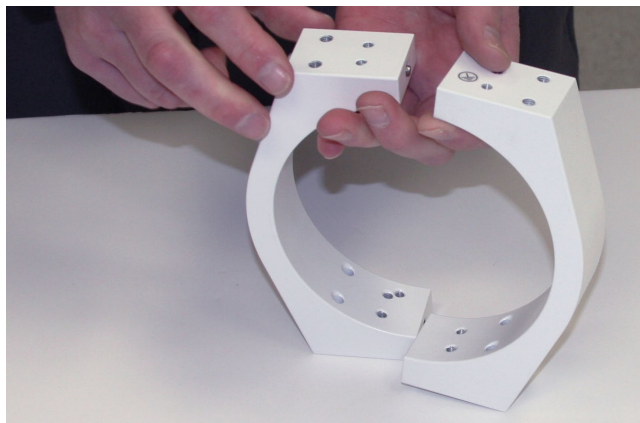


Figure 1. Separate the Clamp

2. Fit two halves of the clamp around the VST. Install the screws on each side, and use a 5mm Allen wrench to loosely secure the clamp. (Figure 2) so it can slide freely up and down the VST.

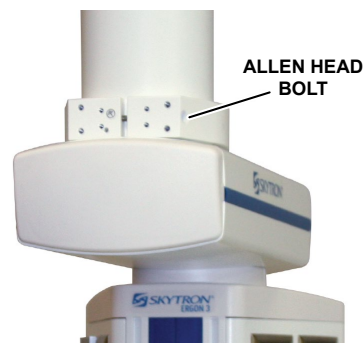


Figure 2. VST Clamp Attachment

3. Raise the clamp until the holes in the clamp can be aligned with the holes in the GCX channel. Then use a 4mm Allen wrench to secure the GCX channel to the clamp with the four cap screws. Do not tighten (Figure 3).

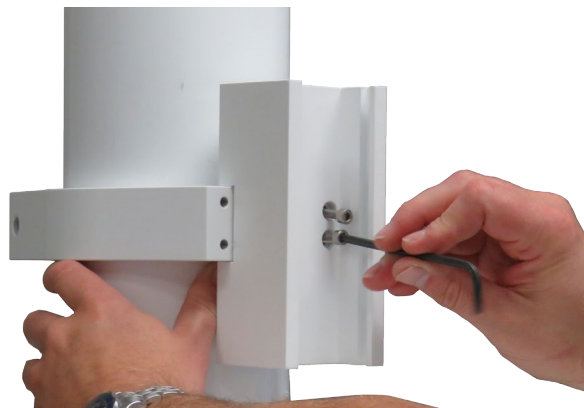


Figure 3. Install the GCX Channel

4. Slide the clamp to the desired location on the VST.
5. Alternately tighten both of the clamp's Allen head bolts to ensure the clamp is attached evenly (Figure 4).

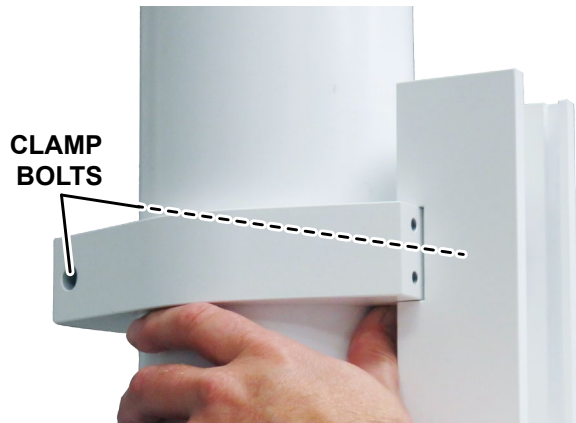


Figure 4. Secure the VST Clamp

6. Finish tightening the four cap screws in the GCX channel installed in step 3.
7. Install the desired GCX accessory, sliding it down into the GCX channel and tightening the set screws.

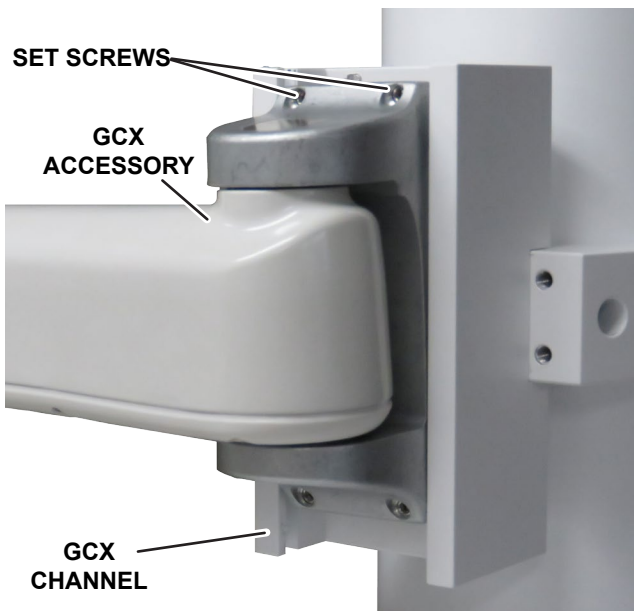


Figure 5. Attach the GCX Accessory

Camera Mount Installation

1. Install the grounding set screw in the threaded hole indicated by the grounding label (Figure 6).

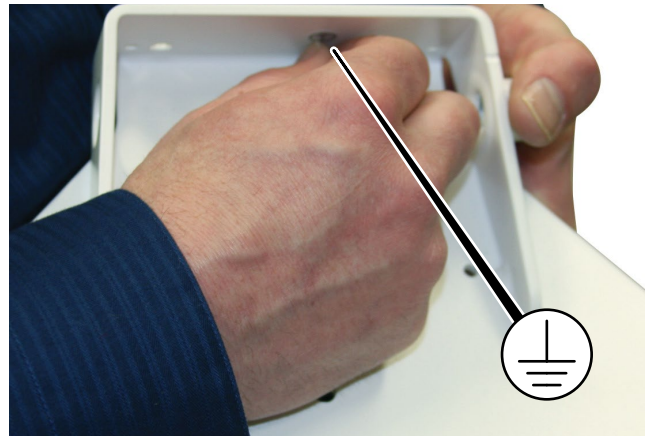


Figure 6. Grounding Set Screw

2. Align the camera mount's top inner holes with the clamp's outer tapped holes (Figure 7).



Figure 7. Align the Camera Mount

3. Using a 5mm Allen wrench, secure the camera mount, PN H8-300-33-A to the VST clamp with two bolts and washers.

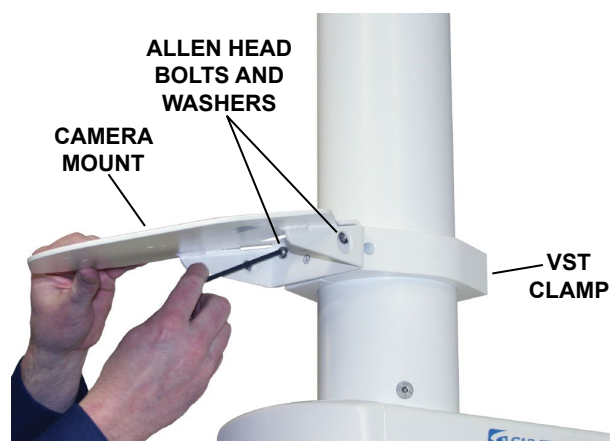


Figure 8. Camera Mount Attachment

4. Tighten the grounding set screw installed in step 1, against the clamp for proper grounding.
5. If necessary install a sterile handle to the camera mount (Figure 9).



Figure 9. Sterile Handle

Labels

Labels for the VST clamps, GCX channel, and camera mount are shown below.



H8-300-53-A



H8-300-39-A

VST Clamps



H8-300-33

Camera Mount

Date	Revision	Revision History
04/16/2016	0	Initial Release
9/27/2017	1	Updated the document to reflect new GCX channel design

Distributed by:

US - SKYTRON
5085 Corporate Exchange Blvd. S.E.
Grand Rapids, MI 49512 (616) 656-2900
www.skytron.us

Manufactured by:



IHBO BV
Floresstraat
NL-8022 AD Zwolle

