



RAIL MOUNT ATTACHMENTS - INSTRUCTIONS FOR USE

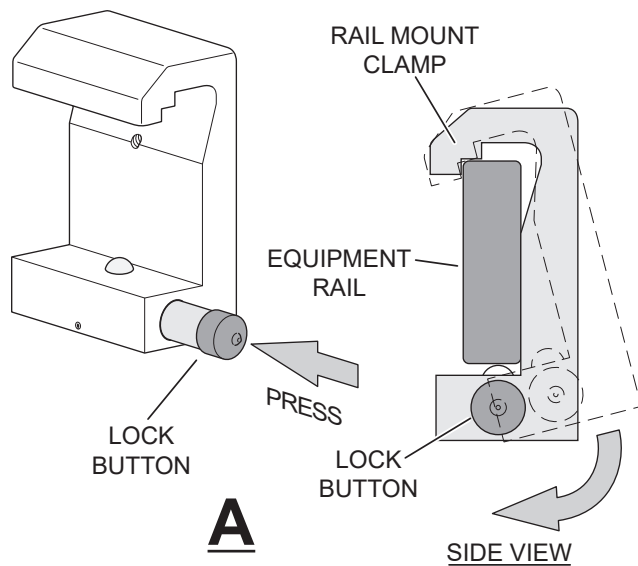
Rail mount attachments are designed for use on a wide variety of rail mounted accessories. It allows for quick and easy attachment to any equipment rail.

Follow the attachment directions A, B or C below according to the rail mount clamp used on the accessory you are installing.

Clamp Attachments

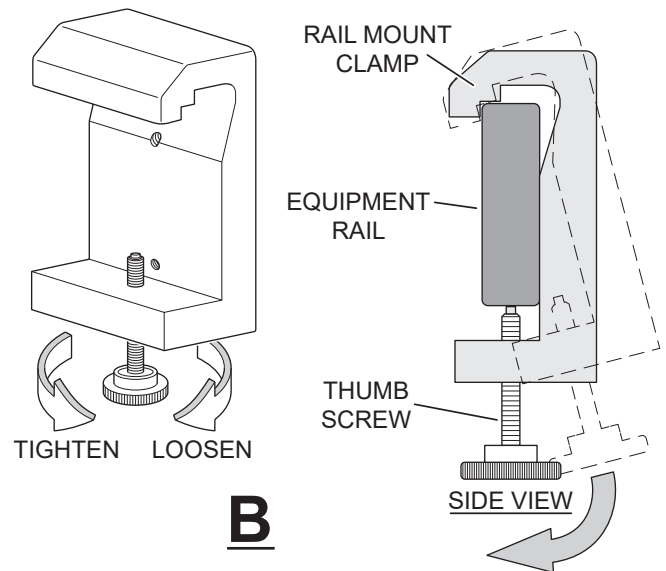
Rail Mount Quick Release A

1. Place the rail mount clamp over the equipment rail at approximately a 45 degree angle.
2. Press the lock button and lower the accessory on to the rail.
3. Release the lock button.



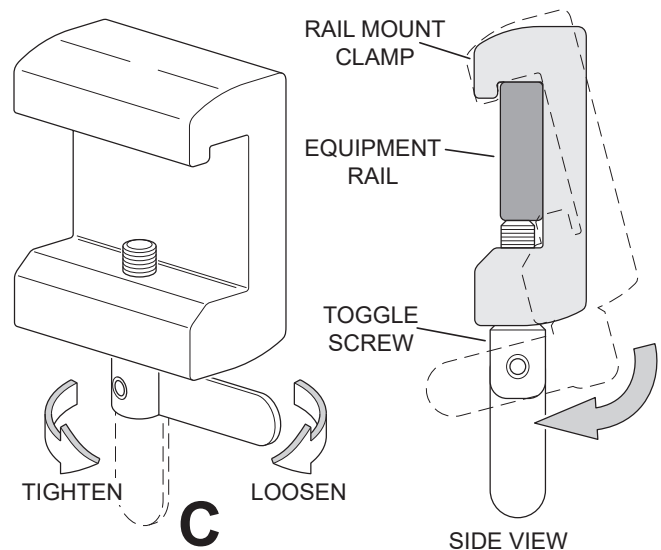
Rail Mount Thumb Screw B

1. Place the rail mount clamp over the equipment rail at approximately a 45 degree angle.
2. If necessary loosen the thumb screw and lower the accessory on to the rail.
3. Tighten the thumb screw.



Rail Mount Toggle Screw C

1. Place the rail mount clamp over the equipment rail at approximately a 45 degree angle.
2. If necessary loosen the toggle screw and lower the accessory on to the rail.
3. Tighten the toggle screw.



Date	Revision	Revision History
09/16/2016	0	Initial Release

Distributed by:

US - SKYTRON
5085 Corporate Exchange Blvd. S.E.
Grand Rapids, MI 49512 (616) 656-2900
www.skytron.us

Manufactured by:



Eastern Rail Systems
2014 Ford Rd # G
Bristol, PA 19007
www.easternrail.com

Manufactured by:



IHBO BV
Forestraat 52
NL-8022 AD Zwolle
Netherlands

The base language for this document is ENGLISH. Any translations must be from the base language document.

Printed copies are not controlled documents.

Although current at the time of publication, SKYTRON'S policy of continuous development makes this document subject to change without notice. If a current document is required, contact your local SKYTRON representative or contact SKYTRON directly at the distribution addresses listed above.



5085 Corporate Exchange Blvd. S.E.
Grand Rapids, MI 49512 • 616.656.2900 • FAX 616.656.2906