

TABLE AND PAD CLEANING - INSTRUCTIONS FOR USE

Skytron surgical tables and accessories are made from high quality materials. It is important to use proper cleaning techniques to maximize the service life of the table and its components.

Chemicals used in Operating Room cleaners can be aggressive and must be applied in a proper manner to avoid damage to the table and its components. Soft surface medical devices, such as surgical table pads, are especially vulnerable to these types of cleaners.

Follow all warnings and cautions indicated by cleaning product manufacturers! Some cleaners will not be compatible with all medical devices. Product cleaning and disinfecting utilization procedures must be followed. Immediately discontinue the use of any cleaner causing discoloration, bleaching, or damage to your Skytron table or surgical pads! Consult your chemical supplier for cleaner alternatives.

CAUTION

Most damage occurs as the result of improper drying of the cleaner. Pay close attention to surfaces that remain wet for an extended period of time.

Pad Cleaning

1. Remove all linens from the surgical compression pads and place them in an appropriate container for soiled laundry.
2. Remove imaging tray spacers or other loose items from the surgical table / compression pads. Disinfect with cleaning fluid, if appropriate.
3. Apply cleaning fluid liberally to all sides of the pad with a clean lint-free cloth (Figure 1).
4. After the required disinfecting time inspect the compression pad for visible dried residue. Use a clean lint free cloth dampened with clean water to remove residue and cleaning fluid.



Figure 1. Apply Cleaning Fluid

CAUTION

Natural evaporation of a cleaner cannot occur between the table top and pad. Damage to the pad and table may occur if the surfaces are not thoroughly dried before replacing the pads (Figure 2).

5. Using a clean, dry, lint-free cloth, thoroughly remove all moisture from each side of the pad, and place in a position so it dries thoroughly on all sides.
6. When the compression pads and the top of the surgical table have completely dried, secure the pads back onto the table. **DO NOT** allow liquid to become trapped between the pads and the table.

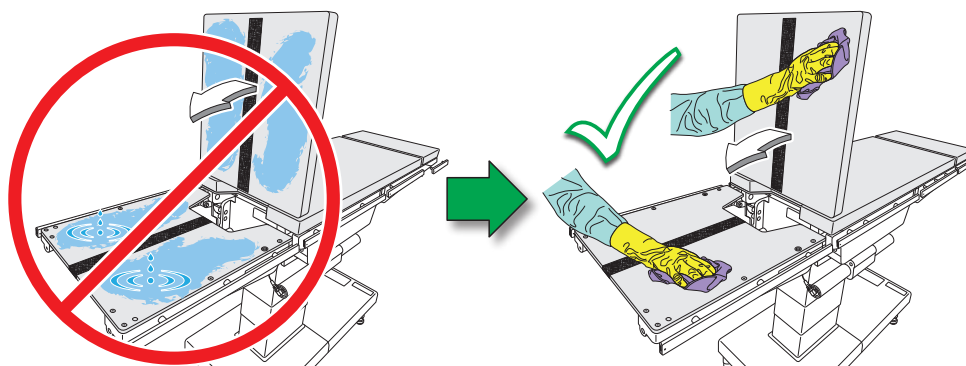


Figure 2. Dry Pad and Table Top Thoroughly Before Replacing Pad

Table Top Cleaning

1. Place table top in level position (Figure 3).
2. Ensure that all power is removed from the table. Take preventive measures to avoid spraying directly into connectors or electrical receptacles.
3. Use disposable materials to remove major contaminants from the table, following appropriate biohazard waste disposal procedures.
4. Remove all table pads and place them on a flat surface for cleaning.

CAUTION

Use a ready-to-use detergent diluted as required by manufacturer. Ensure that the active ingredients of the detergent are compatible with the materials of the SKYTRON table.

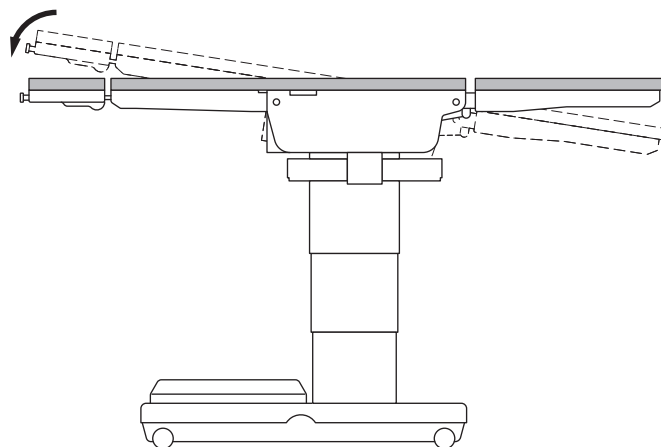


Figure 3. Level the Table

5. Apply cleaning detergent liberally to each table top section and wipe with a clean lint-free cloth (Figure 4).
6. Using a clean, damp, lint-free cloth, wipe each table top section to remove the cleaning detergent.
7. Using a clean, dry, lint-free cloth, wipe the table top sections to remove all moisture.
8. **IMPORTANT!** Before placing table pads back onto the surgical table, ensure both the pad and table top surfaces are completely dry.

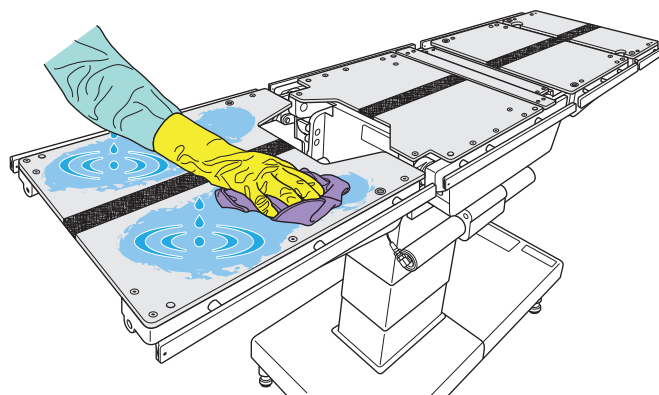


Figure 4. Apply Detergent to Table Top

Pendant Control Cleaning

CAUTION

DO NOT submerge the pendant control in any water or cleaning solutions!

1. Apply cleaning solution to the pendant control and cord.
2. Using a clean, damp, lint-free cloth, wipe the pendant control to remove the cleaning solution.
3. Using a clean, dry, lint-free cloth, wipe the pendant control and cord to remove all moisture.



Figure 5. DO NOT Submerge Pendant Control

Table Column and Base Cleaning

1. Raise table to its maximum height to expose all sections of the table column. (Figure 6).
2. Ensure that all power is removed from the table. Take preventive measures to avoid spraying directly into connectors or electrical receptacles.
3. Remove major contaminants from the table with disposable materials following appropriate biohazard waste disposal procedures.

CAUTION

Use a ready-to-use detergent diluted as required by manufacturer. Ensure that the active ingredients of the detergent are compatible with the materials of the SKYTRON table.

4. Apply cleaning detergent liberally to the column, sides, and table base (Figure 7).
5. Using a clean, damp, lint-free cloth, wipe the column and table base to remove the cleaning detergent.
6. Using a clean, dry, lint-free cloth, wipe the column and table base to remove all moisture.

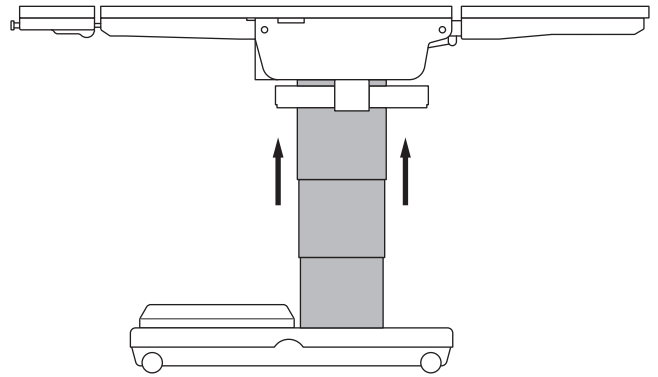


Figure 6. Raise Table to Max Height

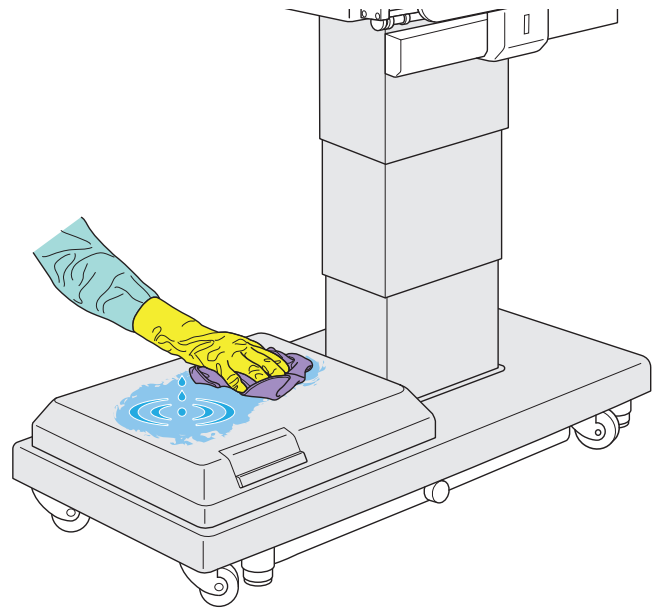


Figure 7. Apply Detergent to Column and Base

Disinfecting Pads and Table

Acceptable Solutions:

- Sodium Hypochlorite 6% diluted to 0.1% (halogen containing compound)
- Hypo Alcohol (iodine color removing agent)
- Chlorhexidine (chlorhexidine gluconate 0.5%)
- Benzalkonium Chloride (invert soap 10%)
- Povidone Iodine
- Ethanol 80%
- Oxydol (hydrogen peroxide)
- Isopropyl Alcohol (IPA) 99.5%

NOTICE

Ensure disinfectant does not dry when wiping the pads or table.

1. Remove all table pads from the table.
2. Apply a proper amount of disinfectant on a clean, lint-free cloth. Thoroughly wipe the top, sides, and bottom of the pads with the cloth.
3. Disinfect the table top and the side rails using the same procedure.
4. Wipe all parts with a dry, clean, lint-free cloth within 15 minutes after disinfecting or as directed for the disinfecting agent.

Revision History

Date	Revision	Revision History
07/17/2019	0	Initial Release

Distributed by:

US - SKYTRON

5085 Corporate Exchange Blvd. S.E.

Grand Rapids, MI 49512 (616) 656-2900

www.skytron.us

The base language for this document is ENGLISH. Any translations must be from the base language document.

Printed copies are not controlled documents.

Although current at the time of publication, SKYTRON'S policy of continuous development makes this document subject to change without notice. If a current document is required, contact your local SKYTRON representative or contact SKYTRON directly at the distribution addresses listed above.

