



5085 Corporate Exchange Blvd. S.E.
Grand Rapids, MI 49512 • 616.656.2900

2-010-09

PREMIUM LOCKING ARMBOARD - INSTRUCTIONS FOR USE

The Premium Locking Armboard attaches to the side rails of SKYTRON surgical tables to support a patient's arm(s) during surgical procedures.

Specifications

Width	5-1/8" [130mm]
Height	4" [102mm]
Length	26" [660mm]
Product Weight	5 lbs 12 oz [2.6 Kg]

Prior to Use



WARNING

Avoid use of armboard if any defect or malfunction is found.

1. Ensure the armboard shows no visible signs of damage, i.e. cracks, chips, etc.
2. Activate the side rail clamp release handle and inspect for function. Activate the release rod to ensure proper locking function (Figure 1).

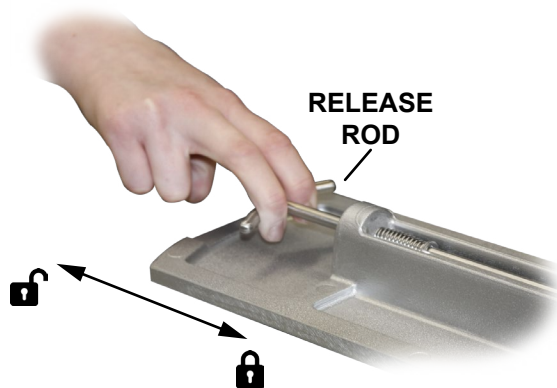


Figure 1. Release Rod

3. Inspect armboard Velcro.

Install the Armboard

1. With the lock knob fully loosened, depress the lock clamp lever (Figure 2).
2. Pivot the armboard downward until level with the table top and release the lock clamp lever.

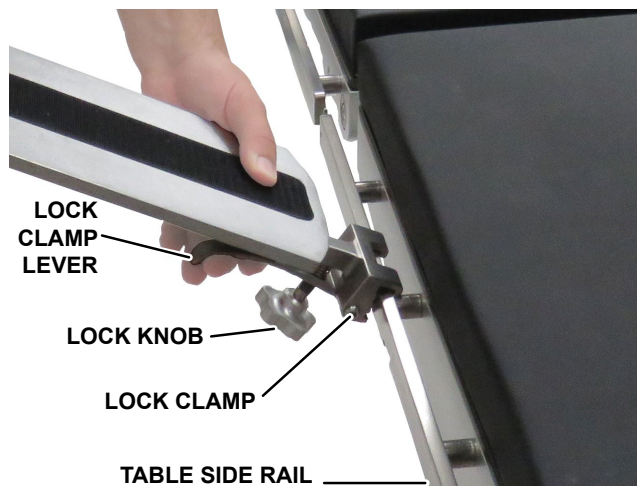


Figure 2. Armboard Components

3. Tighten the lock knob.
4. Make sure the arm board is secure.
5. Install the desired arm pad (Velcro side down).

Position the Armboard



WARNING

Always exercise extreme care as to avoid pinch points and stress on the patient's arm. In order to prevent nerve paralysis:

- **DO NOT** position the armboard beyond 90° of the patient medial line (arm above the shoulder) when the patient is in the prone position.
- **DO NOT** turn up the inside of the arm (palm facing upward) when the patient is in the prone position.
- **DO NOT** use this armboard if the upper surface is lower than the surface of the surgical table.

1. With the armboard installed on a table, pull the rotator trigger (Figure 3). Keep outward tension on the trigger.

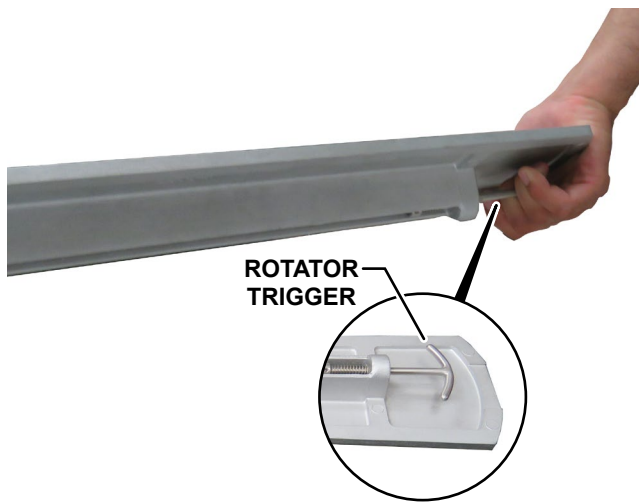


Figure 3. Rotator Trigger

2. Horizontally pivot the armboard to the desired location.
3. Release the rotator trigger.

Remove the Armboard

1. Loosen the lock knob.
2. Depress the lock clamp lever (Figure 2).
3. Pivot the armboard up and pull it off the table side rail.

Cleaning

Always follow current AORN/EORNA Journal Guidelines to ensure proper cleaning and disinfection procedure.

Always follow product cleaning and disinfecting utilization instructions and warnings indicated by cleaning product manufacturer.



WARNING

Personal injury to patient or staff may result from a lack of proper maintenance of this equipment.

The following procedure should be followed when cleaning the armboard between cases or operations:

1. Place the armboard and the table top in a level position.
2. Ensure that all power is removed from the table.

Take preventive measures to avoid spraying directly into connectors or electrical receptacles.



WARNING

Always follow OSHA/EASHW blood-borne pathogens standards for protective clothing, including gloves, masks, and eye protection when cleaning the armboard.

3. Remove major contaminants from the armboard with disposable materials following appropriate biohazard waste disposal procedures.
4. Remove the pad and place it on a flat surface for cleaning.

CAUTION

DO NOT use cleaners containing phenolics.

5. Use a ready-to-use detergent or one diluted per the manufacturer's recommendations. Ensure that the active ingredients of the product are compatible with the materials of the SKYTRON table.
6. Apply cleaning fluid liberally to top and sides of each pad and wipe with a clean lint-free cloth.
7. Using a clean, damp, lint-free cloth, wipe the pads to remove the cleaning fluid.
8. Using a clean, dry, lint-free cloth, wipe the pads to remove all moisture.
9. Repeat Steps 6 through 8 to clean the bottom of each pad. Allow to dry.

CAUTION

When using spray cleaners, **DO NOT** spray fluids directly into electrical receptacles or components.

Before replacing pads on the table, make sure the pads and all adjoining surfaces are completely dry. Moisture trapped between the pads and adjoining surfaces may cause distortion of table tops.

10. When the cleaning procedure is complete, replace all pads and accessories as applicable.

Disinfection

The following antiseptic solutions are approved for use on the table:

- Sodium Hypochlorite 6% diluted to 0.1% (halogen containing compound)
- HypoAlcohol (iodine color removing agent)
- Chlorhexidine (chlorhexidine gluconate 0.5%)
- Benzalkonium chloride (invert soap 10%)
- Povidone iodine
- Ethanol 80%
- Oxydol (hydrogen peroxide)
- Isopropyl alcohol (IPA) 99.5%

Perform the following steps when disinfecting the armboard.

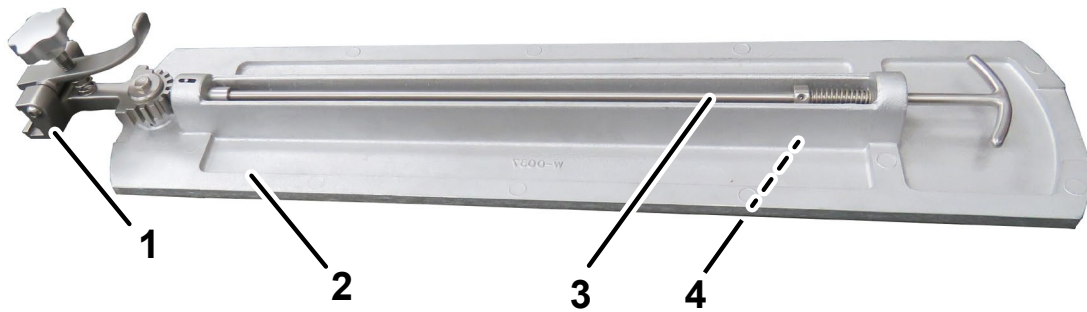
1. Remove the pad from the armboard.
2. Apply a proper quantity of disinfectant on a clean and lint-free cloth, then wipe the top, sides, and bottom of the pads with the cloth.

NOTICE

Use enough disinfectant on the cloth to ensure it does not dry when wiping.

3. Disinfect the top of the armboard and the side rails using the same procedure.
4. Wipe all parts with dry, clean, and lint-free cloth within 15 minutes after disinfecting.

Replacement Parts



NO.	PART NO.	DESCRIPTION	QTY
1	2-010-09-1	LOCKING CLAMP UNIT	1
2	2-010-03-12	ARMBOARD FRAME	
3	2-010-03-1	ROD ASSEMBLY (.275" OD)	1
		SHAFT (included in item 3)	
		RATCHES RELEASE SPRING (included in item 3)	
		SCREW (included in item 3)	
		ROLL PIN (included in item 3)	
		ROTATION STOPPER UNIT (included in item 3)	
4	D3-010-18-H	VELCRO HOOK	1
N/S	2-010-02-2S	2" PREMIUM ARMBOARD SOF-PAD	1
N/S	2-010-02-3S	3" PREMIUM ARMBOARD SOF-PAD	1
N/S	2-010-02-4S	4" PREMIUM ARMBOARD SOF-PAD	1
N/S	2-010-02-5S	5" PREMIUM ARMBOARD SOF-PAD	1

N/S = Not Shown

Revision History

Date	Revision	Revision History
11/21/2016	0	Initial Release
04/06/2018	1	Added "Prior to Use" section page one. Added Position the Armboard WARNING page one. Moved "Remove the Armboard" section to page two. Revised Figure 3 page two. Moved "Revision History" to the back page.

Distributed by:

US - SKYTRON

5085 Corporate Exchange Blvd. S.E.

Grand Rapids, MI 49512 (616) 656-2900

www.skytron.us

Manufactured by:

Mizuho Corporation

3-30-13 Hongo, Bunkyo-ku

Tokyo 113-0033

JAPAN/



5085 Corporate Exchange Blvd. S.E.
Grand Rapids, MI 49512 • 616.656.2900