



5085 Corporate Exchange Blvd. S.E.  
Grand Rapids, MI 49512 • 616.656.2900

PN 4-040-09-7

## SKYTRON KUB BOARD - INSTRUCTIONS FOR USE

The SKYTRON KUB board replaces the leg section on compatible Skytron surgical tables, giving clinicians the ability to position a patient on the table nearer to the foot end of the table top. The accessory is intended to be used in conjunction with lithotomy stirrups to achieve a greater imaging window.



### Specifications



#### WARNING

Any additional accessories used may affect the weight capacity. Always follow the lowest patient weight capacity of any of the accessories used.

Width	22" [559mm]
Length	14" [356mm]
Product Weight	12.95 lbs [5.87 Kg]
Weight Capacity	400 lbs [181.4 Kg] Patient Weight

### KUB Board Installation



#### WARNING

Ensure that the KUB board is securely attached to the leg axis pins of the surgical table before placing a patient on the table.



#### WARNING

Always follow any safety guidelines or weight capacities of any additional accessories used during a procedure.

1. Adjust the height of the table top to a safe and comfortable height required to remove the leg section.
2. Position the leg section so it is parallel with the floor and remove the leg section
3. Align the holes in the KUB board with the leg axis pins. Push in until the KUB board bottoms out against the table and an audible click is heard (Figure 1). Check to make sure that the accessory is securely attached before use.

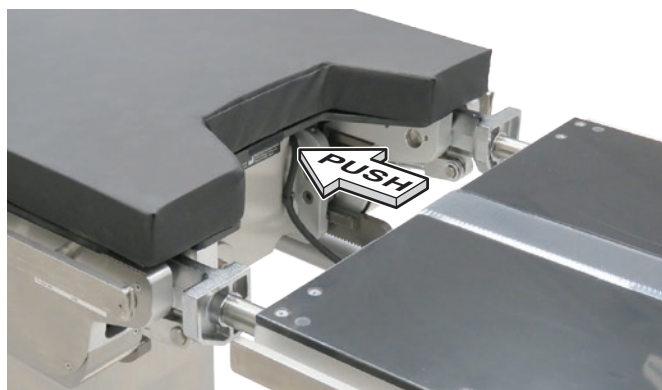


Figure 1. Attach the KUB Board

### KUB Board Removal

To remove the KUB board, simultaneously push both release levers upward and pull the accessory away from the surgical table (Figure 2). The surgical table leg section can then be reattached.

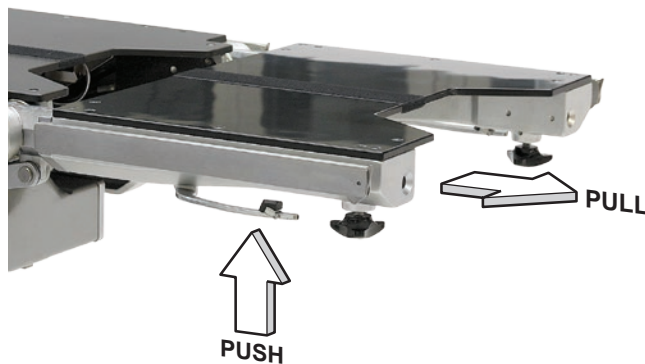


Figure 2. Remove the KUB Board

## Pin Type Transfer Board Installation & Removal



### WARNING

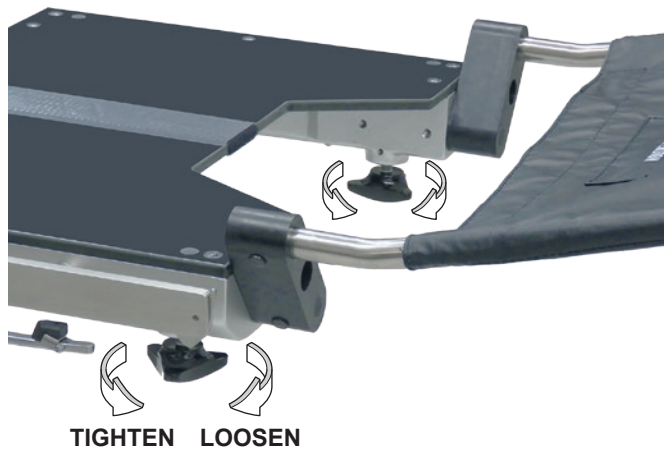
When a Pin Type transfer board is being used, ensure it is secured tightly with the KUB board lock knobs. **DO NOT** use the transfer board as a table extension. This accessory was designed as a temporary support. Injury to the patient may occur if the transfer board is used incorrectly.

### NOTICE

A Pin-Type Transfer Board (P.N. 4-030-20) should be used in the setup for lithotomy positioning with the KUB board.

#### Installation:

1. Insert the pins of the transfer board into the holes of the KUB board. Push in until the transfer board bottoms out against the KUB board (Figure 3).



**Figure 3. Pin Type Transfer Board**

2. Tighten the two lock knobs counter clockwise to secure the transfer board.

#### Removal:

1. Loosen the lock knobs clockwise on the KUB board.
2. Pull the transfer board away horizontally.

## Rail Type Transfer Board Installation & Removal

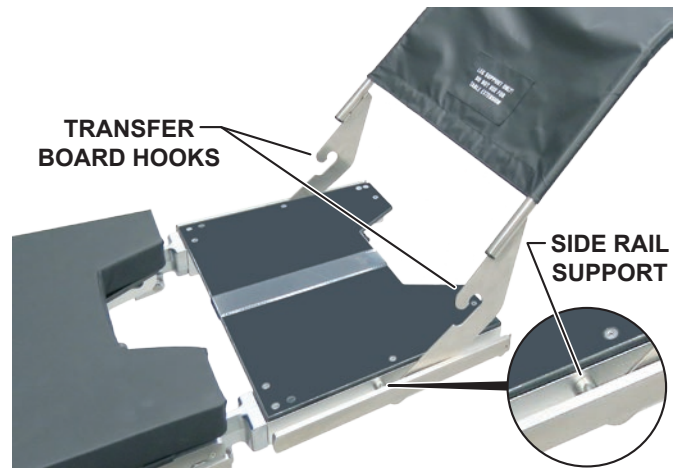


### WARNING

When a Side Rail Type transfer board is being used, ensure it is secured properly to the KUB board side rails. **DO NOT** use the transfer board as a table extension. This accessory was designed as a temporary support. Injury to the patient may occur if the transfer board is used incorrectly.

#### Installation:

1. Align the blades on the transfer board with the rails on surgical table.
2. Tilt the transfer board up and insert the blades under the side rail support on each side of the KUB board (Figure 4).



**Figure 4. Rail Type Transfer Board**

3. Place the transfer board hooks over the side rail supports on the KUB board. Tilt the transfer board down to align with the KUB board.

#### Removal:

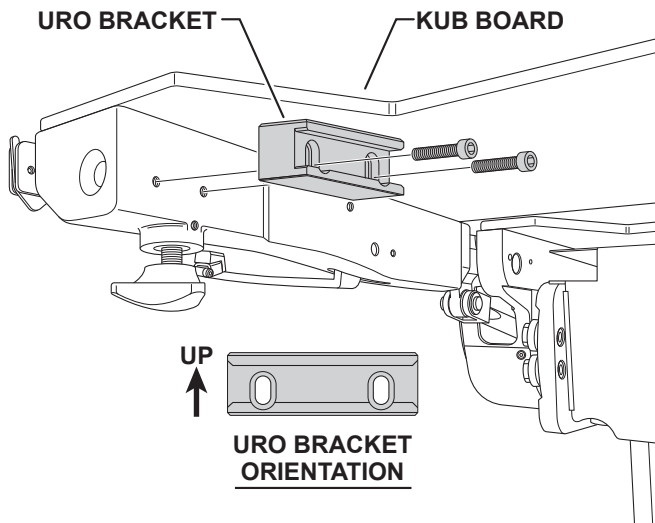
1. Tilt the transfer board up to disengage the hooks.
2. Slide the blades from under the side rail support and pull up and out on the transfer board.

## Uro Tray Installation

### NOTICE

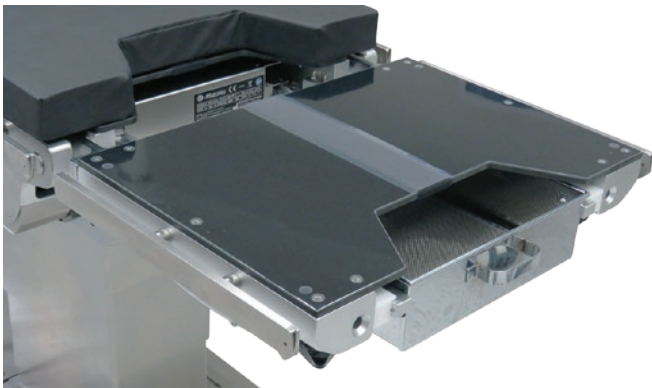
The Uro Tray is an optional accessory and requires two Uro Tray Brackets, PN 4-040-07-1, to be installed on the KUB board. If necessary the Uro tray brackets can be purchased separately.

1. Orient the thicker portion of the Uro Bracket above the screw slots facing up (Figure 1).



**Figure 5. Install Uro Brackets**

2. Using the existing tapped holes, attach the Uro Bracket to the KUB board with two Allen bolts.
3. Repeat steps one and two to Install the second bracket on the opposite side.
4. Insert both legs of the Uro Tray into the brackets and slide the tray forward until it stops (Figure 6).



**Figure 6. Install the Uro Tray**

## Stirrups Installation

### NOTICE

The KUB board is compatible with Lithotomy Stirrups. Install stirrups and clamps in accordance with their respective instructions for use.

## Cleaning

Always follow current AORN/EORNA Journal Guidelines to ensure proper cleaning and disinfection procedure.

Always follow product cleaning and disinfecting utilization instructions and warnings indicated by cleaning product manufacturer.



### WARNING

**Always follow OSHA/EASHW blood- borne pathogens standards for protective clothing, including gloves, masks, and eye protection when cleaning the accessories.**

The following procedure should be followed when cleaning the KUB board between cases or operations:

1. Remove major contaminants from the KUB board with disposable materials following appropriate biohazard waste disposal procedures.

### CAUTION

**DO NOT** use cleaners containing phenolics.

2. Use a ready-to-use detergent or one diluted per the manufacturer's recommendations. Ensure that the active ingredients of the product are compatible with the materials of the SKYTRON KUB board.
3. Apply cleaning fluid liberally to the KUB board and wipe with a clean lint-free cloth.
4. Using a clean, damp, lint-free cloth, wipe the KUB board to remove the cleaning fluid.

## Disinfection

The following antiseptic solutions are approved for use on the KUB board:

- Sodium Hypochlorite 6% diluted to 0.1% (halogen containing compound)
- Hypo Alcohol (iodine color removing agent)
- Chlorhexidine (chlorhexidine gluconate 0.5%)
- Benzalkonium chloride (invert soap 10%)
- Povidone iodine
- Ethanol 80%
- Oxydol (hydrogen peroxide)
- Isopropyl alcohol (IPA) 99.5%

Perform the following steps when disinfecting the KUB board.

1. Remove the KUB board from the table.
2. Apply a proper quantity of disinfectant on a clean and lint-free cloth, then wipe the KUB board with the cloth.

### NOTICE

Use enough disinfectant on the cloth to ensure it does not dry when wiping.

3. Wipe all KUB board parts with a dry, clean, lint-free cloth within 15 minutes after disinfecting.

## Replacement Parts

PART NO.	DESCRIPTION	QTY,
4-040-09-3	TOP	1
4-040-09-2	RADIOGRAPHIC TOP	1
4-040-14-10	SIDE RAIL (Pair.)	1
4-040-09-1S	PAD,2 Inch	1
4-040-09-3S	PAD,3 Inch	1
4-040-09-4SW	PAD,4 Inch	1

## Revision History

Date	Revision	Revision History
04/11/2019	0	Initial Release

### Distributed by:

US - SKYTRON  
5085 Corporate Exchange Blvd. S.E.  
Grand Rapids, MI 49512 (616) 656-2900  
www.skytron.us

### Manufactured by:



Mizuho Corporation  
3-30-13 Hongo, Bunkyo-ku  
Tokyo 113-0033  
JAPAN

The base language for this document is ENGLISH. Any translations must be from the base language document.

Printed copies are not controlled documents.

Although current at the time of publication, SKYTRON'S policy of continuous development makes this document subject to change without notice. If a current document is required, contact your local SKYTRON representative or contact SKYTRON directly at the distribution addresses listed above.



5085 Corporate Exchange Blvd. S.E.  
Grand Rapids, MI 49512 • 616.656.2900