



5085 Corporate Exchange Blvd. S.E.
Grand Rapids, MI 49512 • 616.656.2900

PN 3-040-12

GENERAL TILT SEAT - INSTRUCTIONS FOR USE



The General Tilt Seat slides onto leg axis pins in place of the leg section on compatible Skytron surgical tables. It is intended to be used in conjunction with stirrups or split leg accessories.

Specifications

Width	21.5" [546 mm]
Product Weight	12.35 lbs [5.6 kg]

Compatible Tables and Weight Limits

The following list shows the patient weight limit for the General Tilt Seat when fitted to a compatible table.

Compatible Table Model	Weight Limit
3500(B)	400 lbs [181.44 kg]
3501 Series, 3502	400 lbs [181.44 kg]
3600 Series	500 lbs [226.8 kg]
6300 Series	400 lbs [181.44 kg]
6600 Series	500 lbs [226.8 kg]
6700 Series	500 lbs [226.8 kg]



CAUTION

DO NOT use the General Tilt Seat with 6500 series Skytron surgical tables.

Install the General Tilt Seat

1. Position the leg section so it is parallel with the floor.
2. Remove the leg section: Push up on the two release levers beneath the leg section (Figure 1) and pull the leg section off the axis pins (Figure 2).



Figure 1. Leg section release levers

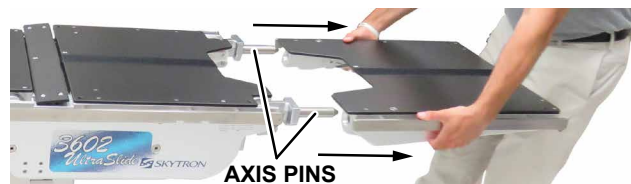


Figure 2. Removing leg section

3. Slide the General Tilt Seat onto the leg axis pins (Figure 3): Align the holes on the General Tilt Seat with the leg axis pins and push it in until it clicks into place. Test that it is securely attached.

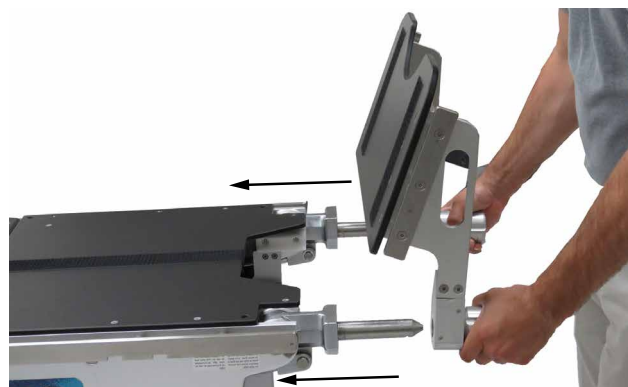


Figure 3. Installing General Tilt Seat

4. Position the General Tilt Seat and affix attachments as needed.

Remove the General Tilt Seat

1. Remove General Tilt Seat attachments, such as stirrups.
2. Position the leg axis pins so they are parallel with the floor. The general tilt seat will be at a sharp angle from the table.
3. Fully twist both release handles outward from the center (Figure 4) and pull the General Tilt Seat off the leg axis pins (Figure 5).

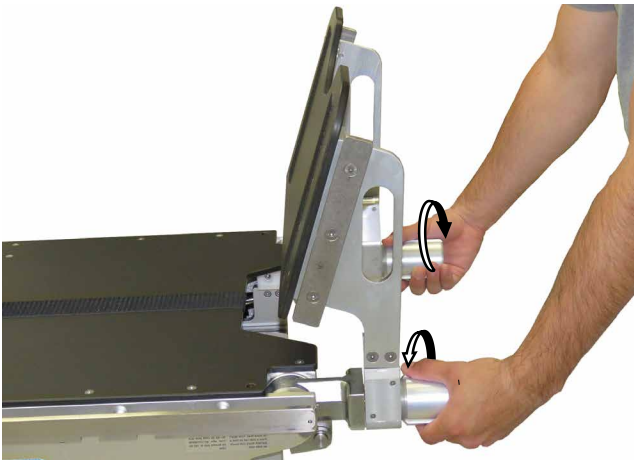


Figure 4. Twist release handles

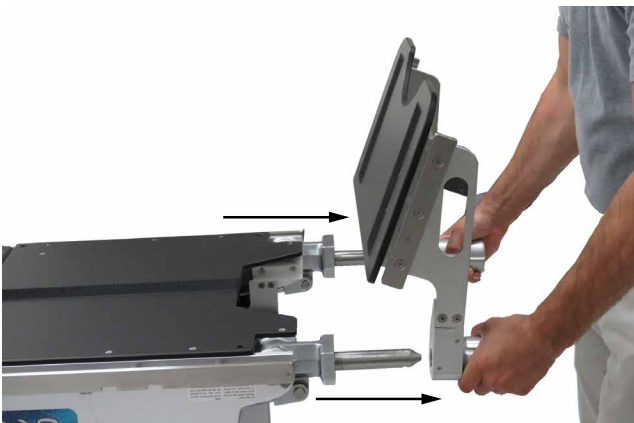


Figure 5. Pull General Tilt Seat off

Cleaning

Always follow current AORN/EORNA Journal Guidelines to ensure proper cleaning and disinfection procedure.

Always follow product cleaning and disinfecting utilization instructions and warnings indicated by cleaning product manufacturer.



WARNING

Personal injury to patient or staff may result from a lack of proper maintenance of this equipment.

CAUTION

Caution should be taken when cleaning the table to prevent excessive fluid entry into electrical connectors.

The following procedure should be followed when cleaning the General Tilt Seat between cases or operations:

1. Place General Tilt Seat and the table top in a level position.
2. Ensure that all power is removed from the table. Take preventive measures to avoid spraying directly into connectors or electrical receptacles.



WARNING

Always follow OSHA/EASHW blood-borne pathogens standards for protective clothing, including gloves, masks, and eye protection when cleaning the surgical table.

3. Remove major contaminants from the General Tilt Seat with disposable materials following appropriate biohazard waste disposal procedures.

4. Remove the pad and place it on a flat surface for cleaning.

CAUTION

DO NOT use cleaners containing phenolics.

5. Use a ready-to-use detergent or one diluted per the manufactures recommendations. Ensure that the active ingredients of the product are compatible with the materials of the SKYTRON table.

6. Apply cleaning fluid liberally to top and sides of each pad and wipe with a clean lint-free cloth.
7. Using a clean, damp, lint-free cloth, wipe the pads to remove the cleaning fluid.
8. Using a clean, dry, lint-free cloth, wipe the pads to remove all moisture.
9. Repeat Steps 6 through 8 to clean the bottom of each pad. Allow to dry.

CAUTION

When using spray cleaners, DO NOT spray fluids directly into electrical receptacles or components.

Before replacing pads on the table, make sure the pads and all adjoining surfaces are completely dry. Moisture trapped between the pads and adjoining surfaces may cause distortion of table tops.

10. When the cleaning procedure is complete, replace all pads and accessories as applicable.

CAUTION

Avoid immersing the pendant control assembly in liquids.

Disinfection

The following antiseptic solutions are approved for use on the table:

- Sodium Hypochlorite 6% diluted to 0.1% (halogen containing compound)
- HypoAlcohol (iodine color removing agent)
- Chlorhexidine (chlorhexidine gluconate 0.5%)
- Benzalkonium chloride (invert soap 10%)
- Povidone iodine
- Ethanol 80%
- Oxydol (hydrogen peroxide)
- Isopropyl alcohol (IPA) 99.5%

Perform the following steps when disinfecting the General Tilt Seat.

1. Remove all table pad from the General Tilt Seat.
2. Apply a proper quantity of disinfectant on a clean and lint-free cloth, then wipe the top, sides, and bottom of the pads with the cloth.

NOTICE

Use enough disinfectant on the cloth to ensure it does not dry when wiping.

3. Disinfect the top of the General Tilt Seat and the side rails using the same procedure.

4. Wipe all parts with dry, clean, and lint-free cloth within 15 minutes after disinfecting.

Labels

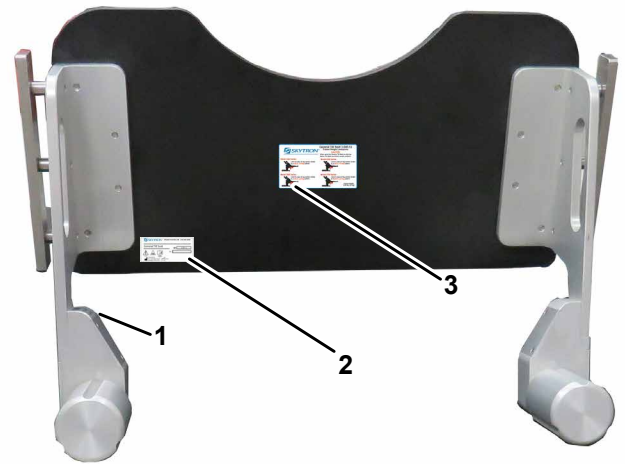


Figure 6. Label locations

Figure 6 call-out #1



Figure 7. Serial number label

Figure 6 call-out #2

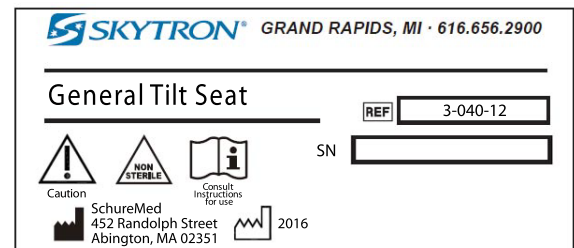


Figure 8. Product label

Figure 6 call-out #3

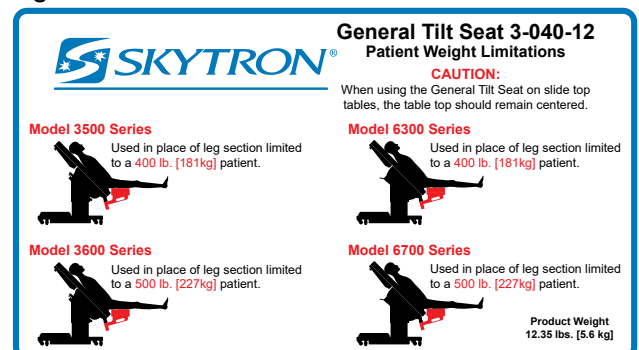
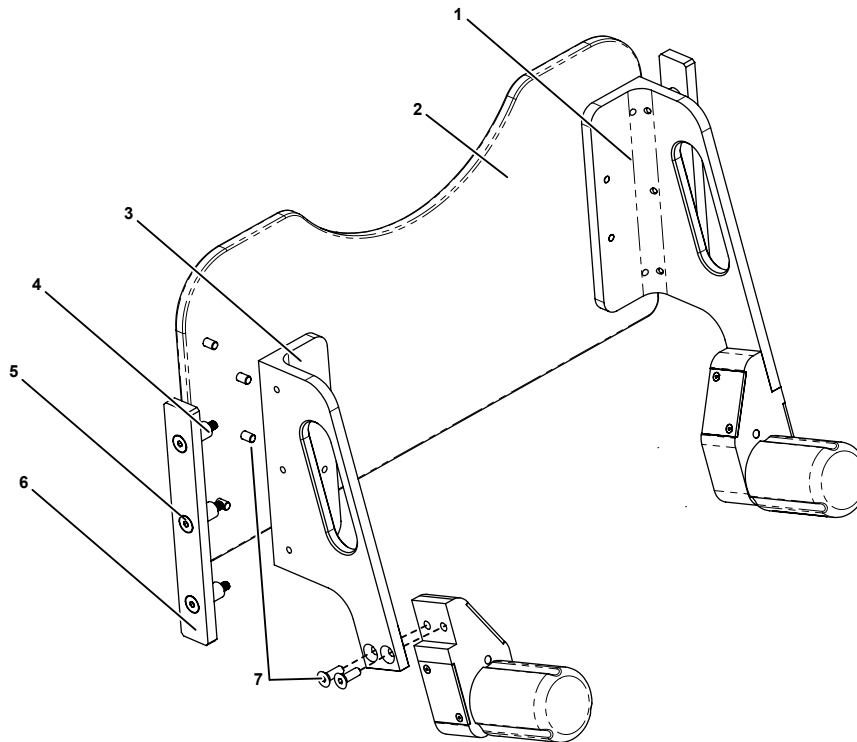


Figure 9. Weight limit label

Replacement Parts



	Part Number	Description	Quantity
1	3-040-12-8	SKYTRON GENERAL TILT SEAT - SIDE BRACKET 2	1
2	3-040-12-10	SKYTRON GENERAL TILT SEAT - PHENOLIC PLATE	1
3	3-040-12-9	SKYTRON GENERAL TILT SEAT - SIDE BRACKET 1	1
4	3-040-12-14	SPACER 1/2" OUTER DIAMETER x 1/4" INNER DIAMETER x 3/4" LONG	6
5	3-040-12-18	SCREW, 1/4-20 x 1-1/2 FH SCS	6
6	3-040-12-3	SKYTRON GENERAL TILT SEAT - SIDE RAIL	2
7	3-040-12-19	SCREW, 1/4-20 x 3/4 FH SCS	12

Revision History

Date	Revision	Revision History
08/08/2016	0	Initial Release
09/22/2016	1	Pg 1 changed 3600 series weight limit to 500 lbs [226.8 kg] and 6300 series to 400 lbs [181.44 kg]

Distributed by:
US - SKYTRON
 5085 Corporate Exchange Blvd. S.E.
 Grand Rapids, MI 49512 (616) 656-2900
www.skytron.us



Manufactured by:
SchureMed
 452 Randolph St.
 Abington, MA 02351
www.schuremed.com/

SKYTRON®
 5085 Corporate Exchange Blvd. S.E.
 Grand Rapids, MI 49512 • 616.656.2900