

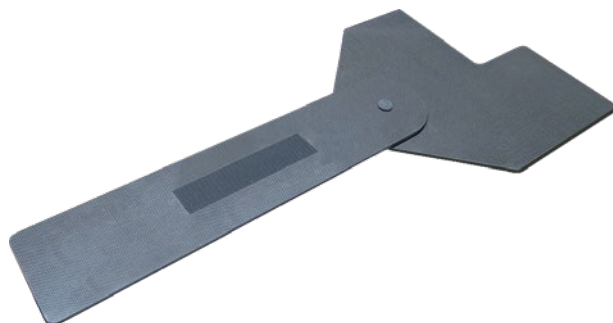


5085 Corporate Exchange Blvd. S.E.
Grand Rapids, MI 49512 • 616.656.2900

P/N 2-060-05

CARBON FIBER ARMBOARD - INSTRUCTIONS FOR USE

The Carbon Fiber Armboard is designed to be compatible with Skytron's 40" carbon fiber extension or 3000 series of tables. It offers fingertip to fingertip imaging and easy attachment to support a patient's arm during surgical procedures.



Specifications

Width	18" [457mm]
Height	3/4" [19mm]
Length	39½" [1003mm]
Product Weight	4½ lbs [2.0 Kg]

Install the Armboard

1. Remove the pad from the Carbon Fiber Extension or 3000 series table.
2. Place the Carbon Fiber Armboard in the desired orientation and location on the table or Carbon Fiber Extension, with the Velcro strip on the pivot arm facing up (Figure 1).

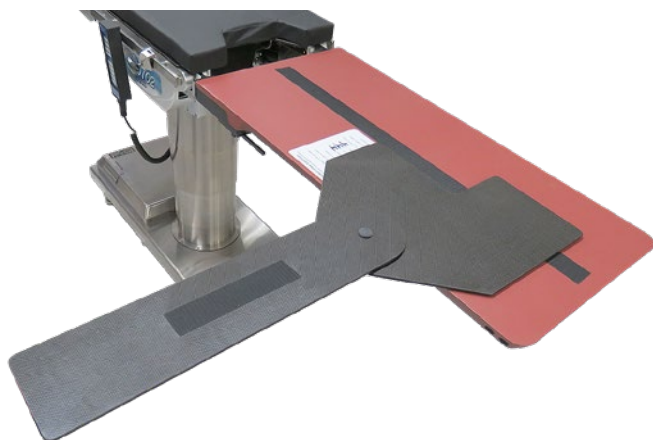


Figure 1. Install the Armboard

3. Install the Carbon Fiber Extension or 3000 series table pad (Velcro side down).
4. Install the arm pad (Velcro side down).

Position the Armboard

WARNING

Always exercise extreme care as to avoid pinch points and stress on the patient's arm. In order to prevent nerve paralysis:

- DO NOT position the armboard beyond 90° of the patient medial line (arm above the shoulder) when the patient is in the prone position.
- DO NOT turn up the inside of the arm (palm facing upward) when the patient is in the prone position.
- DO NOT use this armboard if the upper surface is lower than the surface of the surgical table.

CAUTION

Prior to use ensure the armboard is securely fastened to the extension or table.

5. Horizontally pivot the arm to the desired position (Figure 2).

NOTE:
PADS HAVE BEEN REMOVED
FOR CLARITY



Figure 2. Position the Armboard

Cleaning

Always follow current AORN/EORNA Journal Guidelines to ensure proper cleaning and disinfection procedure.

Always follow product cleaning and disinfecting utilization instructions and warnings indicated by cleaning product manufacturer.



WARNING

Personal injury to patient or staff may result from a lack of proper maintenance of this equipment.

The following procedure should be followed when cleaning the Carbon Fiber Armboard between cases or operations:

1. Place the armboard and the table top in a level position.
2. Ensure that all power is removed from the table. Take preventive measures to avoid spraying directly into connectors or electrical receptacles.



WARNING

Always follow OSHA/EASHW blood- borne pathogens standards for protective clothing, including gloves, masks, and eye protection when cleaning the surgical table.

3. Remove major contaminants from the armboard and table with disposable materials, following appropriate biohazard waste disposal procedures.
4. Remove the pads and place them on a flat surface for cleaning.

CAUTION

DO NOT use cleaners containing phenolics.

5. Use a ready-to-use detergent or one diluted per the manufacturer's recommendations. Ensure that the active ingredients of the product are compatible with the materials of the SKYTRON Carbon Fiber Armboard and table.
6. Apply cleaning fluid liberally to top and sides of each pad and wipe with a clean lint-free cloth.
7. Using a clean, damp, lint-free cloth, wipe the pads to remove the cleaning fluid.

8. Using a clean, dry, lint-free cloth, wipe the pads to remove all moisture.
9. Repeat Steps 6 through 8 to clean the bottom of the pads. Allow to dry.

CAUTION

When using spray cleaners, DO NOT spray fluids directly into electrical receptacles or components.

Before replacing pads on the table, make sure the pads and all adjoining surfaces are completely dry. Moisture trapped between the pads and adjoining surfaces may cause distortion of table tops.

10. When the cleaning procedure is complete, replace all pads and accessories as applicable.

CAUTION

Avoid immersing the table's pendant control assembly in liquids.

Disinfection

The following antiseptic solutions are approved for use on the table:

- Sodium Hypochlorite 6% diluted to 0.1% (halogen containing compound)
- Hypo Alcohol (iodine color removing agent)
- Chlorhexidine (chlorhexidine gluconate 0.5%)
- Benzalkonium chloride (invert soap 10%)
- Povidone iodine
- Ethanol 80%
- Oxydol (hydrogen peroxide)
- Isopropyl alcohol (IPA) 99.5%

Perform the following steps when disinfecting the armboard.

1. Remove the pad from the armboard.
2. Apply a proper quantity of disinfectant on a clean and lint-free cloth, then wipe the top, sides, and bottom of the pads with the cloth.

NOTICE

Use enough disinfectant on the cloth to ensure it does not dry when wiping.

3. Disinfect the top of the armboard and the side rails using the same procedure.
4. Wipe all parts with dry, clean, and lint-free cloth within 15 minutes after disinfecting.

Replacement Parts

PART NO.	DESCRIPTION	QTY,
2-060-05-S	2" WELDED SEAM PAD	1
2-060-05-3S	3" WELDED SEAM PAD	1

Labels

**CARBON FIBER ARMBOARD,
SHOULDER L-SHAPE**

REF 26296
LOT 123456
QTY 1
Quantity

2009-01-22

EC REP MDSS GmbH Schiffgraben 41
D-30175 Hannover, Germany **CE**

MADE IN USA 26296-310-004

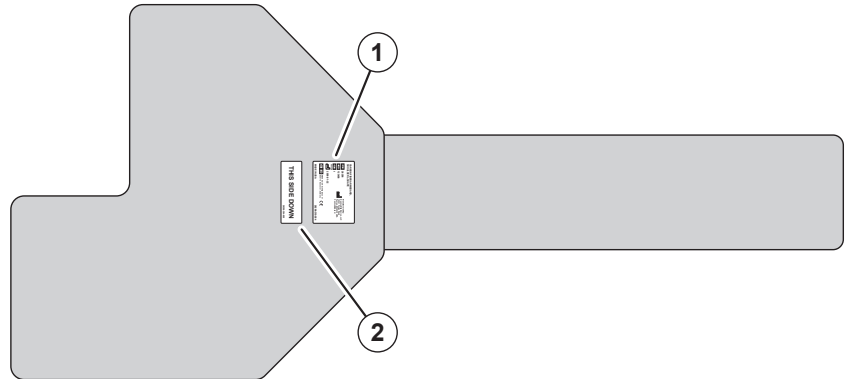
Manufactured By:
Domco Med-Device, LLC
14241 Fenton Road
Fenton, MI 48430 USA
ComicoMed.com

1

THIS SIDE DOWN

26296-304-000

2



Revision History

Date	Revision	Revision History
03/15/2019	0	Initial Release

Distributed by:

US - SKYTRON

5085 Corporate Exchange Blvd. S.E.
Grand Rapids, MI 49512 (616) 656-2900
www.skytron.us

Manufactured by:

Domico Med-Device
14241 N. Fenton Road
Fenton MI 48430
US - United States

