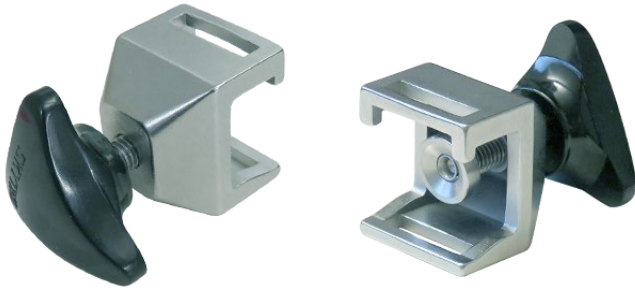


BAR CLAMP-STANDARD - INSTRUCTIONS FOR USE

The SKYTRON Bar Clamp fastens quickly and easily to any standard flat U.S. table side rail.



Specifications

Width	1½" [457mm]
Height	1 11⁄16" [19mm]
Length	3 5⁄16" [84mm]
Product Weight	.45 lbs [2.0 Kg]

Clamp Installation



Prior to use ensure the Bar Clamp and the associated accessory is securely fastened to the table.

1. Locate the top of the clamp with the hooks.
2. Place the hooked side of the clamp over the side rail on the surgical table at a 45 degree angle. (Figure 1).



Figure 1. Install the Bar Clamp

3. Lower the clamp over the side rail.
4. Install the accessory into the bar clamp.
5. Turn the bar clamp lock knob clockwise to secure the accessory and bar clamp to the surgical table side rail.

Clamp Removal



CAUTION

Ensure any accessory used with the Bar Clamp is properly supported before loosening the bar clamp lock knob.

1. Turn the bar clamp lock knob counter clockwise to loosen.
2. Remove any accessory attached to the side rail.
3. Rotate the clamp up approximately 45 degrees and remove it from the side rail (Figure 1).

Cleaning

Always follow current AORN/EORNA Journal Guidelines to ensure proper cleaning and disinfection procedure.

Always follow product cleaning and disinfecting utilization instructions and warnings indicated by cleaning product manufacturer.



WARNING

Personal injury to patient or staff may result from a lack of proper maintenance of this equipment.

The following procedure should be followed when cleaning the Bar Clamp and associated accessories between cases or operations:

1. Place the table top in a level position.
2. Ensure that all power is removed from the table. Take preventive measures to avoid spraying directly into connectors or electrical receptacles.



WARNING

Always follow OSHA/EASHW blood- borne pathogens standards for protective clothing, including gloves, masks, and eye protection when cleaning the surgical table.

3. Remove major contaminants from the Bar Clamp, associated accessories and table with disposable materials, following appropriate biohazard waste disposal procedures.

CAUTION

DO NOT use cleaners containing phenolics.

4. Use a ready-to-use detergent or one diluted per the manufacturer's recommendations. Ensure that the active ingredients of the product are compatible with the materials of the SKYTRON Bar Clamp, accessories and table.

CAUTION

When using spray cleaners, DO NOT spray fluids directly into electrical receptacles or components.

CAUTION

Avoid immersing the table's pendant control assembly in liquids.

Disinfection

The following antiseptic solutions are approved for use on the Bar Clamp, accessories and table:

- Sodium Hypochlorite 6% diluted to 0.1% (halogen containing compound)
- Hypo Alcohol (iodine color removing agent)
- Chlorhexidine (chlorhexidine gluconate 0.5%)
- Benzalkonium chloride (invert soap 10%)
- Povidone iodine
- Ethanol 80%
- Oxydol (hydrogen peroxide)
- Isopropyl alcohol (IPA) 99.5%

Perform the following steps when disinfecting the Bar Clamp, accessories and table.

1. Apply a proper quantity of disinfectant on a clean and lint-free cloth, then wipe all surfaces.

NOTICE

Use enough disinfectant on the cloth to ensure it does not dry when wiping.

2. Disinfect the table top and side rails using the same procedure.
3. Wipe all parts with dry, clean, and lint-free cloth within 15 minutes after disinfecting.

Revision History

Date	Revision	Revision History
03/15/2019	0	Initial Release

Distributed by:

US - SKYTRON
5085 Corporate Exchange Blvd. S.E.
Grand Rapids, MI 49512 (616) 656-2900
www.skytron.us

Manufactured by:

Anholt Technologies
440 Church Road
Avondale, PA 19311
US - UNITED STATES

