

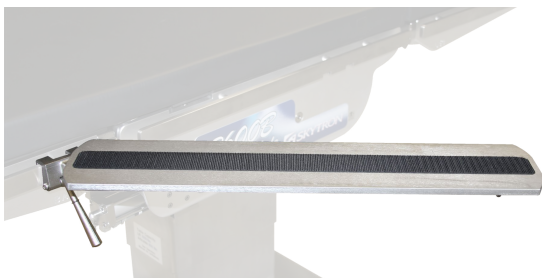


5085 Corporate Exchange Blvd. S.E.
Grand Rapids, MI 49512 • 616.656.2900

PN 2-010-08

PREMIUM ARMBOARD - INSTRUCTIONS FOR USE

The Premium Armboard is an accessory for a SKYTRON surgical table that is used to support the arm of a patient (Figure 1). The easy to adjust locking handle secures the armboard to the table side rail allowing for easy patient positioning.



Specifications

Feature	English	Metric
Length	23-3/8"	595mm
Width	5-1/8"	130mm
Weight	5.75 lbs	2.61 kg

Install the Armboard

Use the following procedure to install the premium armboard on a SKYTRON surgical table:

NOTICE

The premium armboard is designed and validated for use with SKYTRON tables only.

Avoid clamping the armboard in the area of the side rail containing clark socket cut outs.

1. With the armboard at a slight angle and the clamp depressed, place the top of the ratchet assembly over the side rail (Figure 2).
2. Rotate the armboard downward and release the clamp.
3. Check the armboard to ensure it is securely fastened to the table's side rail. The armboard should retain its position.

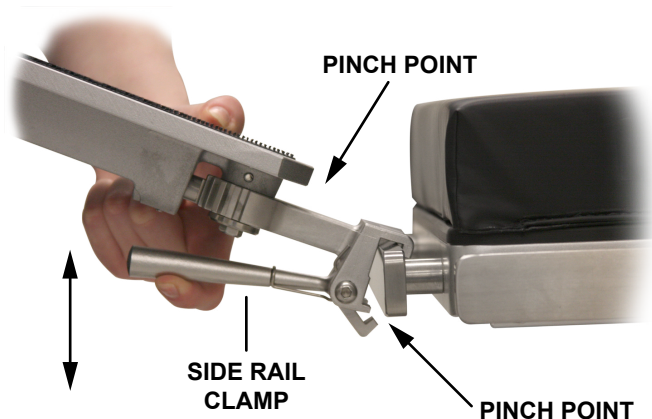


Figure 2. Armboard Installation

Prior to Use



WARNING

Avoid use of armboard if any defect or malfunction is found.

1. Ensure the armboard shows no visible signs of damage, i.e. cracks, chips, etc.
2. Activate the side rail clamp release handle and inspect for function. Activate the release rod to ensure proper locking function (Figure 3).



Figure 3. Release Rod

3. Inspect armboard Velcro.

Position the Armboard



WARNING

Always exercise extreme care as to avoid pinch points and stress on the patient's arm. In order to prevent nerve paralysis:

- **DO NOT position the armboard beyond 90° of the patient medial line (arm above the shoulder) when the patient is in the prone position.**
- **DO NOT turn up the inside of the arm (palm facing upward) when the patient is in the prone position.**
- **DO NOT use this armboard if the upper surface is lower than the surface of the surgical table.**

1. Pull the release rod to unlock the armboard (Figure 3).
2. Rotate the armboard to the desired position and release the rod to lock it in place.

Cleaning

Always follow current AORN/EORNA Journal Guidelines to ensure proper cleaning and disinfection procedure.

Always follow product cleaning and disinfecting utilization instructions and warnings indicated by cleaning product manufacturer.



WARNING

Personal injury to patient or staff may result from a lack of proper maintenance of this equipment.

The following procedure should be followed when cleaning the armboard between cases or operations:

1. Place the armboard and the table top in a level position.
2. Ensure that all power is removed from the table. Take preventive measures to avoid spraying directly into connectors or electrical receptacles.



WARNING

Always follow OSHA/EASHW blood-borne pathogens standards for protective clothing, including gloves, masks, and eye protection when cleaning the surgical table.

3. Remove major contaminants from the armboard with disposable materials following appropriate biohazard waste disposal procedures.
4. Remove the pad and place it on a flat surface for cleaning.

CAUTION

DO NOT use cleaners containing phenolics.

5. Use a ready-to-use detergent or one diluted per the manufacturer's recommendations. Ensure that the active ingredients of the product are compatible with the materials of the SKYTRON table.
6. Apply cleaning fluid liberally to top and sides of each pad and wipe with a clean lint-free cloth.
7. Using a clean, damp, lint-free cloth, wipe the pads to remove the cleaning fluid.
8. Using a clean, dry, lint-free cloth, wipe the pads to remove all moisture.
9. Repeat Steps 6 through 8 to clean the bottom of each pad. Allow to dry.

CAUTION

When using spray cleaners, DO NOT spray fluids directly into electrical receptacles or components.

Before replacing pads on the table, make sure the pads and all adjoining surfaces are completely dry. Moisture trapped between the pads and adjoining surfaces may cause distortion of table tops.

10. When the cleaning procedure is complete, replace all pads and accessories as applicable.

Disinfection

The following antiseptic solutions are approved for use on the table:

- Sodium Hypochlorite 6% diluted to 0.1% (halogen containing compound)
- HypoAlcohol (iodine color removing agent)
- Chlorhexidine (chlorhexidine gluconate 0.5%)
- Benzalkonium chloride (invert soap 10%)
- Povidone iodine
- Ethanol 80%
- Oxydol (hydrogen peroxide)
- Isopropyl alcohol (IPA) 99.5%

Perform the following steps when disinfecting the armboard.

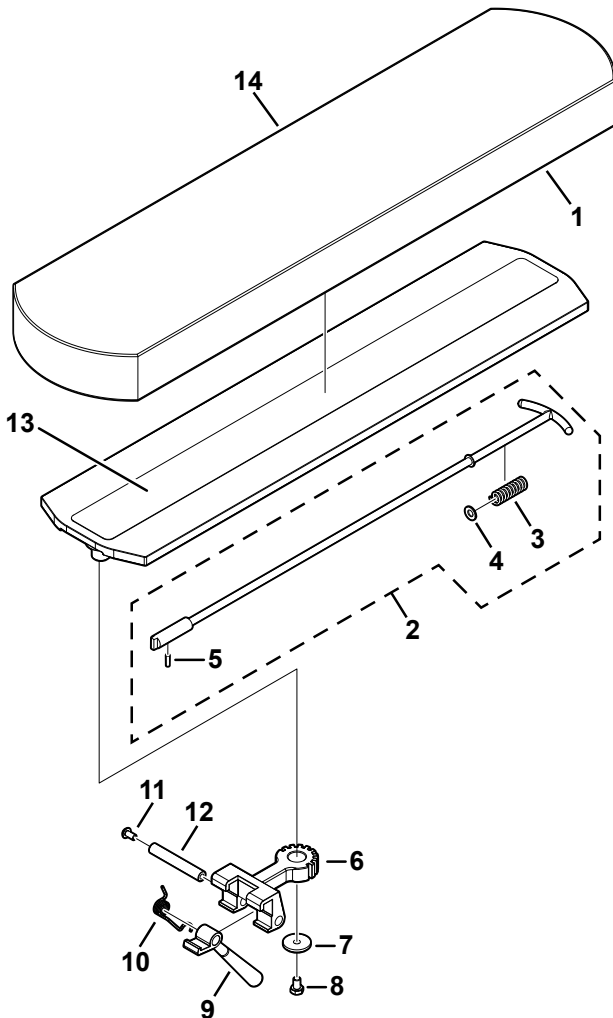
1. Remove the pad from the armboard.
2. Apply a proper quantity of disinfectant on a clean and lint-free cloth, then wipe the top, sides, and bottom of the pads with the cloth.

NOTICE

Use enough disinfectant on the cloth to ensure it does not dry when wiping.

3. Disinfect the top of the armboard and the side rails using the same procedure.
4. Wipe all parts with dry, clean, and lint-free cloth within 15 minutes after disinfecting.

Replacement Parts



NO.	PART NO.	DESCRIPTION	QTY
1	2-010-03-12	ARMBOARD FRAME	1
2	2-010-03-01	ROD ASSEMBLY (.275" O.D.)	1
3	NAS	RATCHET RELEASE SPRING (included in item 2)	1
4	NAS	KEEPER (included in item 2)	1
5	NAS	ROLL PIN (included in item 2)	1
6	2-010-03-5	RATCHET	1
7	2-010-03-3	WASHER	1
8	2-010-03-4	BOLT	2
9	2-010-03-1	CLAMP	1
10	2-010-03-2	SPRING	1
11	2-010-03-10	SCREW	1
12	2-010-03-11	PIVOT SHAFT	1
13	D3-010-18-H	VELCRO, HOOK	1
14	2-010-02-2S	2" SOF PAD (optional)	1
	2-010-02-3S	3" SOF PAD (optional)	1
	2-010-02-4S	4" SOF PAD (optional)	1
	2-010-02-5S	5" SOF PAD (optional)	1

NAS = Not Available Separately

Revision History

Date	Revision	Revision History
05/31/12	0	Initial release.
05/07/14	1	Revised document layout. Went from two pages to four. Updated Skytron logo. Added introductory statement. Made technical data into a chart. Added caution statements.
01/18/2018	2	Revised document to current layout specifications. Changed CAUTION statement to WARNING statement. Changed Technical Data to Specifications. Made into a chart. Changed Operation Instructions to Position the Armboard. Added Cleaning and Disinfection section. Removed maintenance section. Covered in Cleaning and Disinfection sections. Revised Replacement Parts illustration. Added part numbers to items 7 & 8. Added 4" and 5" soft pads to item 14. Added Revision History and SKYTRON footer to back page.

Distributed by:

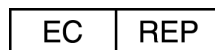
US - SKYTRON
5085 Corporate Exchange Blvd. S.E.
Grand Rapids, MI 49512 (616) 656-2900
www.skytron.us

SKYTRON EUROPE BV
Floresstraat 52
8022 AD Zwolle
THE NETHERLANDS

Manufactured by:



MIZUHO Corporation
3-30-13 Hongo
IBunkyo-ku, Tokyo 113-0033
JAPAN



Emergo Europe
Molenstraat 15
2513 BH The Hague
THE NETHERLANDS

 **SKYTRON®**
5085 Corporate Exchange Blvd. S.E.
Grand Rapids, MI 49512 • 616.656.2900